

Creative Catering



EQUIPMENT & UTENSILS

2017 ~ 2018

www.wvhowe.co.uk



As one of the country's leading distributors of catering equipment, we supply a large range of both light and heavy equipment to catering establishments throughout the United Kingdom. A huge range of products, together with our state of the art facility in Kings Norton, enables us to provide a fast and efficient service to all kinds of caterers, whether large or small.

HOW TO ORDER

All orders can be placed in the following ways:

- Written on an official requisition form or headed paper.
- By facsimile 0121 459 3121
- By email orders@wvhowe.co.uk
- By visiting www.wvhowe.co.uk

GENERAL DISCOUNTS

Standard Discounts:

- Orders over £150 net value; 15%
- Orders over £250 net value; 20%

CARRIAGE

Orders in excess of £50 (ex VAT):

- Delivered FREE anywhere on UK mainland. (Please contact us for a quotation for delivery elsewhere) Orders smaller than £50 (ex VAT) - Subject to Standard charge of £5.00

EXPRESS SERVICE

Urgent needs can be met with our next day service for which there is a charge of £15.00. Delivery is subject to stock availability.

GENERAL TERMS AND CONDITIONS

Prices are subject to VAT at the appropriate rate.

Unfortunately we do receive price increases from time to time, so please contact us should you wish to confirm the current costs prior to placing your order.

We should be notified in writing or by facsimile within 7 days of missing or damaged goods.

A collection / re-stocking charge of 20% or £15.00 whichever is the greater, will be made for all returned goods which have been ordered in error.

Dimensions and capacities are approximate and are intended as a guide only. In the interests of continuous product improvement, the right is reserved to change specifications.

Full retention of the legal title to the goods remains with the Company until payment has been received. Payment is due within 30 days of the invoice date.

COLLECTIONS

COOKING **6-17**

RATIONAL OVENS **6-7**

BBQs **14**

BEVERAGE **18-21**

PREPARATION **22-29**

PRESENTATION **30-31**

REFRIGERATION **32-35**

WAREWASHING **36-38**

MAIDAID DISHWASHERS **36**

TRANSPORTATION **39-44**

TROLLEYS & SHELVING **45-50**

CATERING UTENSILS **51-98**

GASTRONORMS **83-85**

FURNITURE **99-103**

DISPOSABLES **104-105**

CATERING CLOTHING **106-110**

SAFETY & CLEANING **111-116**

INDEX **117-118**

GENERAL TERMS & CONDITIONS **119**

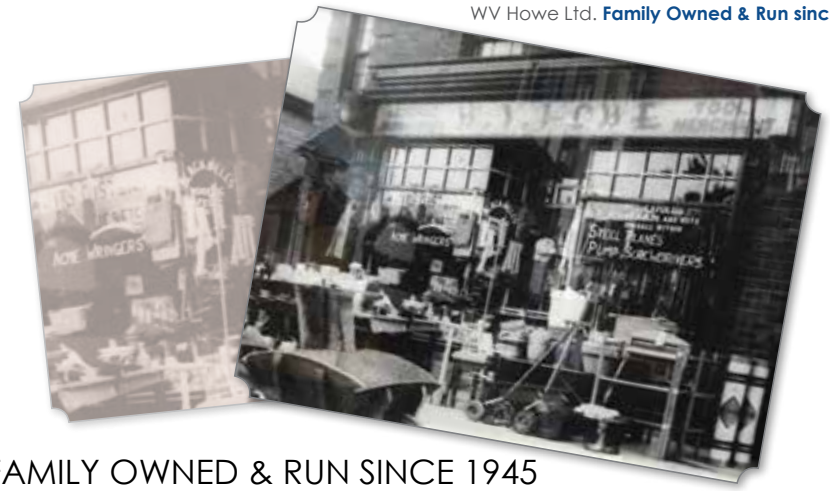
FEATURED BRANDS

Proudly working with industry-leading manufacturers to bring this selection of trusted products to you.



NEW INTRODUCTIONS

Just a sample of our new products and ranges, look out for new products throughout this catalogue.



FAMILY OWNED & RUN SINCE 1945

howe Established by Walter V Howe in Birmingham in 1945, W.V. Howe has a proud family history as a leading wholesale catering equipment supplier. Servicing businesses across the UK, we cover the whole spectrum of equipment for the food service industry from catering utensils and fine dining, to polycarbonate tableware, glassware and much more. Having recently invested in a larger warehousing facility with state of the art IT infrastructures in South Birmingham, we profess to be experts in supplying top quality, commercial kitchen equipment, having supported both the private and public sectors for over 7 decades.

We have amassed a wealth of priceless knowledge and experience and thus are able to source the best quality catering supplies in the country at the most competitive prices. Due to our longstanding reputation for being a reliable and successful business, at W.V. Howe we have built up strong and long-lasting relationships with respected manufacturers both in the UK and abroad, this means that we are able to bring you the most advanced and innovative catering supplies at an incredible price.

We test all equipment before it leaves our premises in order to ensure there are no issues upon delivery, as we understand time is precious in the catering industry. Our vast stock range combined with our helpful and informed staff enables us to provide a reliable service which is second to none.

From your initial enquiry through to after sales support, we strive to be the best in the industry.

With a standard stock range of over 4,000 products, we are able to supply many items on demand and can source non-stock on request at competitive rates at responsive timescales. If what you are looking for is not featured in this catalogue please call us and we will be able to supply the items without hesitation.

We look forward to helping you source exciting new ranges as well as maintaining stock levels of trusted product lines and consumables.



Catering Equipment Cooking



Combimaster Plus Model 201

Capacity 20 x 1/1 GN
Number of meals per day 150-300
Width 879 x Depth 791 x Height 1782 mm
Water inlet R 3/4"
Water outlet DN 50
Water pressure 150-600 kPa or 0,15-0,6 Mpa

Electric

Connected load 37 kW
Mains connection 3 NAC 400 V
Fuse 3 x 63 A
"Hot air" output 36 kW
"Steam" output 36 kW
Weight 268 Kg

Gas

Height incl. flow guard 2087 mm
Electrical connected load 0.7 kW
Fuse 1 x 16 A
Mains connection 1 x 16 A
Gas supply/connection R 3/4"



PLEASE
CALL FOR
PRICING
0121 433 3651

PLEASE
ASK ABOUT
INSTALLATION
0121 433 3651

RATIONAL OVENS - Range & Pricing

Please contact us for pricing and details of the complete range of Rational Ovens & Accessories.

Rational host free live demonstration days on a regular basis all over the country. These events - all run by Rational and conducted by accredited chefs - are held regularly in towns and cities throughout the UK and are the perfect way to see what these market leading ovens are capable of.

For details of the nearest Cooking Live demonstration day, simply email us with your details, or contact one of our team. From there we will liaise with Rational in order to get you a highly sought after place on an event that is the most local to you.



RATIONAL COMBIMASTER PLUS OVENS

Rational is the market leading manufacturer of combi ovens. A truly must have for any professional kitchen.

With 5 cooking modes - Hot Air, Steam, Combination, Vario-Steam and Finishing - the limitless cooking ability of the CombiMaster allows you to bake, roast, grill, steam, braise, blanch, poach and much more, all in a single unit. Perfect for keeping the demanding daily cooking routines under control.



PLEASE
CALL FOR
PRICING
0121 433 3651

Combimaster Plus Model 61

Capacity 6 x 1/1 GN
Number of meals per day 30-100
Width 847 x Depth 776 x Height 782 mm
Water inlet R 3/4"
Water outlet DN 50
Water pressure 150-600 kPa or 0,15-0,6 Mpa

Electric

Connected load 11 kW
Mains connection 3 NAC 400 V
Fuse 3 x 16 A
"Hot air" output 10.3 kW
"Steam" output 9 kW
Weight 110 Kg

Gas

Height incl. flow guard 1012 mm
Electrical connected load 0.3 kW
Fuse 1 x 16 A
Mains connection 1 x 16 A
Gas supply/connection R 3/4"



Combimaster Plus Model 101

Capacity 10 x 1/1 GN
Number of meals per day 80-150
Width 847 x Depth 776 x Height 1042 mm
Water inlet R 3/4"
Water outlet DN 50
Water pressure 150-600 kPa or 0,15-0,6 Mpa

Electric

Connected load 18.6 kW
Mains connection 3 NAC 400 V
Fuse 3 x 32 A
"Hot air" output 18 kW
"Steam" output 18 kW
Weight 135 Kg

Gas

Height incl. flow guard 1272 mm
Electrical connected load 0.39 kW
Fuse 1 x 16 A
Mains connection 1 x 16 A
Gas supply/connection R 3/4"

PLEASE
ASK ABOUT
INSTALLATION
0121 433 3651

Titan Range Cooker

6 Burner Gas Range With Gas Oven.
6 x 6.1kW burners.
Oven temperature 145-290°C.
9kW 2/1 GN Oven.
2 chrome shelves with 4 positions.
Piezo ignition to oven.
Supplied on castors.
External Dimensions: 900(w) x 805(d) x 940(h)mm.
3 Years Parts Warranty, 1 Year On-Site Labour Warranty.

Code	Description	Pack
BP4055	6 Burner Gas Range With Gas Oven 2/1 Gastronorm Compatible 2 Shelves	1



Burco Counter Top Convection Oven



Convection Oven 3.1 Kw.
4 tray capacity.
1/1 GN compatible.
Internal light.
Variable temperature control 50-300°C.
Cook & hold facility.
Bakes, roasts, holds & grills.
External Dimensions: 800(w) x 600(d) x 580(h)mm.
3 Years Parts Warranty, 1 Year Labour Warranty.

Code	Description	Pack
BP4061	Convection Oven 3.1 Kw	1

Rollergrill Slimline Convection Oven

Convection Oven 1.5 Kw.
2 perforated trays plus crumb tray.
5 shelf positions.
1/1 GN compatible.
Internal light.
Variable temperature control 50-230°C.
Twin glass door.
External Dimensions: 370(w) x 535(d) x 495(h)mm.
12 Months Warranty.

Code	Description	Pack
RG4061	Rollergrill Slimline Convection Oven	1



Potato Ovens

A traditionally designed potato oven in black enamel castings on a frame chassis.
Three elements allow even cooking without hot spots.
Cooking capacity 30 x 250g potatoes plus a further 30 ready to serve in an independently.
Heated & illuminated display cabinet with all-round visibility.
The heated ceramic tiled top provides a handy plate warmer.
Dimensions : 700(h) x 430(w) x 430(d)mm.
Power: 1.5kw (Oven) 275w (warmer).
12 Months Warranty.

Code	Description	Pack
VB9040	Queen Victoria Potato Baking Oven	1



An efficient potato oven producing 15 baked potatoes every hour.
Illuminated warmer keeps 15 more baked potatoes hot and ready to serve.
Two pot Bain Marie for delicious hot fillings.
Compact in size, ideal for smaller establishments or where space is at a premium.
Thermostatically controlled.
Dimensions : 380(h) x 410(w) x 450(d)mm.
Power: 1kw (oven) 515w (warmer).
12 Months Warranty.

Code	Description	Pack
VB9042	Potato Station	1



Cooking capacity of 60 x 250gm potatoes per hour plus a large heated display cabinet. Twin fans, thermostat to 300 °C, 2 hour timer.
Supplied with removable easy load trays.
Ideal counter-mounted or back bar.
Toughened double-glazed oven door.
Single phase power supply.
As with any conventional convection oven the Bakemaster will also bake pies, pasties, pizza and bread, giving you the versatility to offer a range of foods to your customers.
Dimensions : 880(h) x 660(w) x 600(d)mm.
Power: 3kw. 12 Months Warranty.

Code	Description	Pack
VB9047	Bakemaster Convection Oven	1



Potato Ovens continued

Economical and cost-effective to use.
Equally suitable to complement our ovens or for a Carvery or Buffet Bar.
Finished in black with solid brass embellishment.
Reliable and easy to use.
Ideal for your baked potato toppings.
Capacity 4 x 1/6 size Gastronorm dishes 1.5 litres each.
Dimensions : 234(h) x 380(w) x 380(d)mm.
Power: 750w. 12 Months Warranty.



Code	Description	Pack
VB9045	Windsor 4 Pot Bain Marie	1

Spuddy Buddy Food Bar

Mounted on four swivelling castors making it portable, manoeuvrable and easy to locate. A colourful parasol is also included as a decorative feature. Easy to operate cooking controls – minimal staff training required. The capacity to provide 3 hot fillings and 2 chilled fillings. Convection twin fan oven to ensure potatoes are evenly cooked. Built to pass through an average single door.

- Wet Well BAIN MARIE 3x1/3 Gastronorm Dishes.
- Cool Box with eutectic ice blocks.
- Four removable oven trays and stainless steel oven interior for hygienic maintenance.
- Toughened safety glass oven door.
- Clear, tough sneeze screen.
- Child friendly.
- Other colours, branding and designs are available.



Code	Description	Pack
VB9051	Spuddy Buddy Food Bar	1

Soup Kettle

Wet heat only with adjustable simmerstat.
Removable inner pot for hygienic cleaning.
Hinged stainless steel lid.
Dimensions 345mm(dia) x 360mm(h).
Power: 400w.
12 Months Warranty.



Code	Description	Pack
MT6091	Soup Kettle Black 10 Ltrs	1

Dualit Commercial Toasters

Award winning Pro Heat elements. Mechanical timer, manually operated eject lever to keep items warm until needed. High lift mechanism to easily remove smaller items. 28mm slots to accommodate optional sandwich cage. Selector Switch allows you to use just the slots that you need. Removable crumb tray.
Handmade in the UK. 12 Months Warranty.

Code	Description	Pack
DT2590	2 Slot - Output approx. 65 slices/hour	1
DT2591	4 Slot - Output approx. 130 slices/hour	1
DT2592	6 Slot - Output approx. 195 slices/hour	1
DT2599	Sandwich Cage	1



Burco Conveyor Toaster

High output - over 400 slices per hour.
Front or rear toast chute option gives greater flexibility for front or back of house use.
Single or double sided toasting - toasts buns, muffins or any bread type up to 70mm thick.
Internal cooling fan and high grade insulation for minimum surface temperatures.
Economy mode saves power and money.
Dimensions : 420(h) x 365(w) x 575(d)mm.
Power: 2.6kw.
3 Years Parts Warranty, 1 Year Labour Warranty.

Code	Description	Pack
BP2598	Conveyor Toaster	1



Roband 6 Slice Grill - Smooth Top Plate

This versatile unit rapidly toasts sandwiches, panini and focaccia, in addition to producing beautifully seared and grilled tender meat, poultry and fish.
Featuring elements embedded directly into smooth, high pressure die-cast aluminium plates, the cooking surface produces an even, extremely efficient heat transfer ensuring food is cooked rapidly with even colouration. The Roband Grill Station truly is a must-have for cafes, takeaways, sandwich shops or anywhere that toasting and/or grilling is required.



Code	Description	Pack
MF2621	Roband 6 Slice Grill - Smooth Top Plate	1

Rollergrill Conveyor Toaster

Ideal for breakfast buffet this heavy duty versatile conveyor toaster toasts everything waffles bagels to muffins and even from bread to buns with an optimal output of 300 - 540 pieces per hour according to the thickness of bread with no pre-heating.
Both sets of 4 infrared quartz elements are individually controlled as well as the speed of the conveyor belt to give the desired result every time. The back can be removed for front or pass through operation: Front operation to toast bread brioche bagels etc.
Pass through operation to toast baguettes garlic bread small pizzas etc.
Features control panel blanking cover.
Dimensions : 455 x 530 x 345 mm.
Power: 2.3kw.
12 Months Warranty - excludes heating elements and quartz glass tubes.

Code	Description	Pack
RG4055	Conveyor Toaster	1



Dualit Sandwich Toaster

Makes toasted sealed triangle sandwiches.
Output approx. 80 rounds per hour. Overflow area for ease of cleaning. 8 minute warm-up time. The two hotplates can be individually operated to save energy.
Heavy gauge stainless steel; heavy duty construction
Dimensions : 190(h) x 400(w) x 220(d)mm.

Code	Description	Pack
DT2598	Sandwich Toaster	1



Contact Grills

Adjustable 'sprung' top plate. Heat resistant handle. Removable drip tray. Temperature range 50-300°C. Thermostatically controlled with pilot light. Includes cleaning brush. Ribbed top and flat bottom plates. 12 Months Warranty.

Code	Description	Pack
PN2621	Dualit Contact Grill - Small Grilling area 225(w) x 230(d)mm. Dimensions: 210(h) x 390(w) x 440(d)mm. Loading: 1.8kW Weight: 14.5 kg	1



Code	Description	Pack
PN2627	Dualit Contact Grill - Large Grilling area 345(w) x 230(d)mm Dimensions: 210(h) x 506(w) x 410(d)mm. Loading: 2.2kW Weight: 20 kg	1

Code	Description	Pack
PN2629	Festival Contact Grill Double Grilling area (cm): 47.5(w) x 23(d) Dimensions 570(w) x 370(d) x 210(h)mm Loading: 1.8 + 1.8kW	1



Sous Vide Tools Compact Water Bath

14 litre capacity. Digital LED display. Precise temperature control to 0.1°C. 99 minute timer. Splash proof keypad. Dry running protection. Cycle end alarm. Quiet operation. External Dimensions: 330 W 365 D 300 H

Code	Description	Pack
RH1031	Sous Vide Tools Compact Water Bath	1

Roller Grill Heavy Duty Contact Grills

This powerfull contact grill will really suit the discerning caterer. The fully adjustable spring and counter balanced top plate will help prevent food being crushed by the weight of the top plate and is fitted with armoured heating elements for perfect heat distribution. The plates of the grill are ribbed both top and bottom and ideal for cooking Panini's, steaks, burgers, blinis etc. Features 15 minute timer, power on light. Grilling area (cm): 36(w) x 24(d) Dimensions 430(w) x 385(d) x 220(h)mm Loading: 3kW. 12 Months Warranty.

Code	Description	Pack
RG4071	Contact Grill Single	1



This double contact grill with it's massive cooking surface of 720 x 240mm is one of the largest contact grills available cooking up to 6 paninis or 12 quarter pounders at a time. By featuring two separate bottom plates you can offer a truly vegetarian menu and also offer steak etc. The fully adjustable spring and counter balanced top plate will help prevent food being crushed by the weight of the top plate and is fitted with armoured heating elements for perfect heat distribution. The robust cast iron plates are ideal for cooking Panini's steaks burgers chicken gammon etc. Features independent controls for each side. 15 minute timer 300°C thermostat power on light. Grilling area (cm): 2 x 360 x 240 Dimensions 835(w) x 385(d) x 220(h)mm Loading: 2 x 3kW. 12 Months Warranty.

Code	Description	Pack
RG4075	Contact Grill Double	1



Induction Hobs

Safe, no naked flame. Efficient, only uses power when pan is on the hob. Fast heating times, near instant control. 12 power levels. Hygienic, easy to clean. 2700 watts Dimensions : 100(h) x 328(w) x 422(d)mm. 12 Months Warranty.

Code	Description	Pack
MJ4131	Counter Top Induction Hob 2.7Kw	1



Supplied with free high quality wok. 2500 watt Counter Top Induction Hob with special dished cooking surface designed for use with a wok. Safe, efficient and fast with near instant control. At-table cooking experience for customers with wok style cooking. Easy to clean both hob and wok. Dimensions : 150(h) x 385(w) x 422(d)mm. 12 Months Warranty.

Code	Description	Pack
AP4135	Counter Top Wok Induction Hob	1



Barbecues



High capacity from 'production line' open grill, for faster profits. Individual controls for each side of the grill. Economic 12hrs full heat from one 19kg propane cylinder. Excess fat collected in any disposable ring-pull can. Can be stored vertically on end, for the least storage space possible. Folds to 190 mm (7½") flat for transport. No assembly needed.

Code	Description	Pack
CN1151	Cinders TG160 Folding Barbecue	1

For real charcoal grilling enthusiasts. Grill area 1524 x 610mm. Adjustable grill height. Heavy duty steel enamel construction. Quick release legs for easy storage. Castors. External Dimensions: 1829 W 610 D 787 H

Code	Description	Pack
RH1051	Crown Verity BM60 Barbecue	1



Ideal for smaller catering establishments. Grill area 860 x 533mm C/W roll dome, bun rack & removable end shelf. High quality stainless steel construction. 79,500 BTU/h. External Dimensions: 1118 W 711 D 915 H

Code	Description	Pack
RH1053	Crown Verity MCB36PACK Barbecue	1



For busier caterers, golf clubs & rental. Grill area 1168 x 533mm C/W roll dome, bun rack & removable end shelf. High quality stainless steel construction. 99,000 BTU/h. External Dimensions: 1422 W 711 D 915 H

Code	Description	Pack
RH1055	Crown Verity MCB48PACK Barbecue	1



Microwave Ovens

1000W output. Unique microwave distribution system & cavity. Sealed base for easy cleaning. Space saving compact footprint. Touch controls - 20 presets - 10 power levels. 21 litre capacity - 3 stage cooking. 490 W 460 D 320 H mm. 12 Months Warranty.

Code	Description	Pack
VA1001	Maestrowave MW10 Microwave Oven	1



Touch controls with 20 presets. 11 power levels. Unique express defrost. Double quantity facility. Countercheck. Extra menu feature. 1.55kW. Dimensions: 520(w) x 406(d) x 309(h). 12 Months on-site warranty.

Code	Description	Pack
VA1010	Sharp R21AT 1000W Microwave	1



Touch controls with 20 presets. 11 power levels. Express defrost. Double quantity. Extra menu. Twin stirrers. Countercheck. Stackable. 2.9kW. Dimensions: 510(w) x 470(d) x 335(h). 12 Months on-site warranty.

Code	Description	Pack
VA1019	Sharp R24AT 1900W Microwave	1



4 power levels. Large 1/1 GN capacity with removable shelf. Quad emission for fast & even heating. 30 Amp. 5.22kW. Dimensions: 650(w) x 526(d) x 471(h). 12 Months on-site warranty.

Code	Description	Pack
VA1032	Panasonic NE3280 3200W Microwave	1



Electric Fryers

Designed specifically for stand alone use. Safety thermostat. Lift out control panel & element. Lift out stainless steel tank for ease of cleaning. Supplied complete with batter plate & lid. Stainless steel head. Basket size 210 x 225 x 115mm.

Code	Description	Pack
LC9027	Counter Top Single Fryer 3kW Dimensions: 310(h) x 540(w) x 280(d)mm.	1



Code	Description	Pack
LC9029	Counter Top Twin Tank Fryer 2 x 3kW Dimensions: 10(h) x 540(w) x 600(d)mm.	1



Designed to be either stand alone or as part of a run. Supplied with a 5 Litre bucket. Thermostatically controlled. Temperature range: 50-200°C. Single or 3 phase.

Code	Description	Pack
LC9031	Free Standing Single Tank Fryer 6kW Dimensions: 1095(h) x 300(w) x 715(d)mm.	1



Electric Chip Scuttle

Keeps fries / chips in ready to serve condition for up to 20 minutes. Folding hinged lid. Removable drain plate for fat drainage & easy cleaning. Supplied with serving scoop. Dimensions: 420(h) x 360(w) x 420(d)mm.

Code	Description	Pack
LC9033	Chip Scuttle 350W	1



Electric Boiling Tops

Fully pressed and sealed hob tops for easy cleaning. Automatic power reduction, if pan boils dry or is removed, prolonging hotplate life. Six-position switches control each plate.

Code	Description	Pack
LC9038	2 Plate Boiling 7kW 290(h) x 300(w) x 600(d)mm.	1

Electric Boiling Tops continued

Code	Description	Pack
LC9039	4 Plate Boiling 7kW 290(h) x 600(w) x 600(d)mm.	1



Electric Griddle

Polished plates to ensure good heat retention & distribution. Stainless steel construction. Thermostat controlled. Removable fat drainage drawer. 13 amp plug supply. Dimensions: 250(h) x 280(w) x 365(d)mm.

Code	Description	Pack
LC9035	Counter Top Griddle 2kW	1



Electric Salamander Grill

Even heat distribution for perfect grilling. Easy to clean vitreous enamelled interior. Five grill shelf positions. Crumb tray and toasting grid included as standard. Dimensions: 310(h) x 600(w) x 350(d)mm.

Code	Description	Pack
LC9037	Salamander Grill 3kW	1



Electric Bains Marie

Perfect for safely holding sauces, gravy and pre-cooked foods for up to two hours at serving temperature. Thermostatic heat control. Front taps for easy draining. Wet heat helps to prevent food from drying out.

Code	Description	Pack
LC9041	4 Pot Bains Marie 1kW Stainless steel 8 pint (4.5 litre) pots included. 290(h) x 450(w) x 600(d)mm.	1



Code	Description	Pack
LC9043	Gastronorm Bains Marie 2kW Choice of gastronorm dish configuration. 290(h) x 600(w) x 600(d)mm.	1

Catering Equipment Beverage

Coffee Machines

Dualit Espresso Coffee Machine

Espresso is specifically designed to create the perfect espresso, cappuccino or latte every time. Unique to the market, Dualit's patented 3 in 1 machines offer three serving options, from quick-fix NX, Fine Tea and Origins Cafe capsules or ESE Pods, to luxurious ground coffee.



Code	Description	Pack
DT2631	Dualit Espresso coffee machine	1

Gaggia Espresso Machine

2 group automatic coffee maker with grinder and water filter. Auto fill 13 litre copper boiler, 1 steam and 1 water spout and cup warmer. 1 or 3 phase power supply (4.7kW). Price includes delivery, installation and on-site warranty.



Code	Description	Pack
GA1051	Gaggia LCD2 coffee espresso machine	1

Water Boilers

Electric Airpot

This electric airpot will keep water at just below boiling temperature with only a one minute re-boil period. Also features a push button pump dispenser and a safety lock lid. Stainless steel liner. Light duty use only - **no commercial warranty**.



Code	Description	Pack
EL9125	Pump Action Flask Electric 4.25 Ltr	1

Coffee Machines

Bravilor Novo 2 Coffee Maker

1 brewing system and 2 hot plates. The Novo brews coffee into a glass decanter and has two self-regulating hot plates that that re-adjust the temperature according to the amount of coffee in the decanter. Throughput per hour approx. 18 litres. Brewing time approx. 5 min. / 1 decanter. Dimensions: 430(h) x 340(w) x 430(d)mm.



Code	Description	Pack
BV2585	Bravilor Novo 2 Coffee Maker	1

Bravilor ISO Coffee Brewer with Flask

Quick filter machine without connection for mains water supply. Includes a 2 litre vacuum flask and a plastic filter pan.



Code	Description	Pack
BV2591	ISO Coffee brewer and flask	1

Bravilor Mondo Twin Coffee Maker

LED controlled operation, stainless steel filter pan and integral hot plates make this machine easy to use. Operation and maintenance require little time. The Mondo Twin quickly brews large quantities of coffee thanks to the double brewing system. 2 brewing systems and 4 hot plates. Throughput/hour approx. 28 litres. Brewing time approx. 6 min. / 2 decanters. Dimensions: 618(h) x 618(w) x 355(d)mm.



Code	Description	Pack
BV2589	Bravilor Mondo Twin Coffee Maker	1

Bravilor Spare Decanter

Decanter for Bravilor coffee makers.



Code	Description	Pack
BV2598	Bravilor spare decanter	1

Fracino Barista Machines

Fracino Bambino Espresso Coffee Machine Automatic Group 1

Dimensions 480(H) x 380(W) x 500(D)mm
Voltage 230V
Can deliver 200 espressos per hour
Produces 20 Litres of hot water per hour
4 Litre boiler capacity
The pressure of water and steam is separately controlled by brass safety valves.
Brass bodied group with stainless shower plate, solenoid valve and high pressure rotary pump.
Thermosyphonic circulation ensures the group is kept constantly hot for perfect coffee making.
All working surfaces, steam and hot water tubes are made in 304 stainless steel.
Zintec powder coated chassis in attractive metallic anthracite.
Standard 110mm group clearance.
Delivery, installation and professional training provided (applies to mainland UK only and excludes islands).



Code	Description	Pack
FC1701	Fracino Bambino Espresso Coffee Machine Automatic 1 Group	1

Fracino Bambino Automatic Group 2 Espresso Coffee Machine



Capacity 10 Ltr Boiler Capacity
Dimensions 485(H) x 580(W) x 500(D)mm
Material Stainless Steel
Output 2.85kW
Voltage 230V
240 Cappuccinos / 400 Espressos per Hour
40 to 50Ltr Hot Water per Hour
Thermosyphonic Circulation Ensures Group is constantly Heated Ready to Serve.
Delivery, installation and professional training provided (applies to mainland UK only and excludes islands).

Code	Description	Pack
FC1703	Fracino Bambino Automatic Group 2 Espresso Coffee Machine	1

Barista Machine Accessories

Code	Description	Pack	Code	Description	Pack
BM1031	2oz Stainless Steel Shot Pot	1	BM1041	Large Mesh Cocoa Shaker	1
BM1031	3oz Stainless Steel Shot Pot	1	BM1045	Coffee Machine Group Head Cleaning Brush	1
BM1033	6oz Stainless Steel Shot Pot	1	ET8107	Milk Frothing Thermometer - Barista Thermometer	1
BM1037	0.6ltr Lined Frothing Jug	1	BM1049	Knock Out Pot 17 x 16 x 10cm	1

Fracino Contempo Coffee Machine Automatic

Dimensions 480(H) x 580(W) x 500(D)mm

Output 4kW

Voltage 230V

Top quality copper boiler heated by multiple looped element. Pressure controlled by a triple contact pressure switch. Automatic water level system with a probe, electronic control unit and solenoid valve

The pressure of water and steam is separately controlled by brass safety valves.

High groups to accommodate large and take out cups
Hot water and steam are released by rotating the valve handles on the solid brass valves.

Brass bodied group with stainless shower plate, solenoid valve and high pressure pump.

Thermosyphonic circulation ensures the group is kept constantly hot for perfect coffee making with temperature control on each group.

Case, waste and cup tray are all made from stainless steel 304. Espresso tray for use with the high group feature ensuring a perfect espresso.

Fitted with easy to clean stainless steel steam tube
240 cappuccinos per hour/400 Espressos per hour

Delivery, installation and professional training provided (applies to mainland UK only and excludes islands).

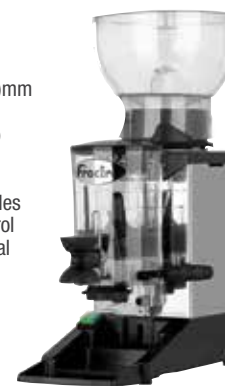


Code	Description	Pack
FC1705	Fracino Contempo Coffee Machine Automatic	1

Fracino Manual Coffee Grinder Model T

With modern style suited for any bar, pub, restaurant or coffee house, the Fracino Model T manual coffee grinder reliably produces fantastic quality results, every time. Featuring adjustable grinder blades and portion control, accurate, perfectly ground coffee can be dispensed into the filter mechanism using the innovative flick level mechanism. The large dispenser is able to accommodate up to 600g of coffee grinds, ensuring ample coffee for busy periods.

Capacity 600g
Dimensions: 560(H) x 180(W) x 290(D)mm
Output 275W
Speed 1300rpm / 0.4hp
Voltage 230V
Weight 8kg
Adjustable grinding blades and coffee portion control
Model fitted with thermal protector.
1kg hopper capacity



Code	Description	Pack
FC1721	Fracino Manual Coffee Grinder Model T	1

Fracino Luxo Coffee Grinder 55db Silver

Specifically designed to run as quiet as possible, the Fracino Luxo coffee grinder in Silver uses advanced technology to grind at just 55 decibels - around the same volume as a refrigerator humming. Equally at home in a quiet environments as well as busy restaurants and cafes, the Fracino coffee grinder has adjustable grinding settings to meet the expectations of even the most exacting of coffee enthusiasts.

Dimensions 625(H) x 285(W) x 405(D)mm
Voltage 230V
Weight 15.5kg
Grinds at just 55db suitable for relaxed and intimate settings
Adjustable grinding blades and coffee portion control.
Hopper made of unbreakable, non-deformable material and suitable for cleaning in a dishwasher at 90 °C
New pneumatic sound and vibration absorbing system that eliminates noise and vibration from the coffee grind
60mm flat blades
1kg hopper capacity



Code	Description	Pack
FC1723	Fracino Luxo Coffee Grinder 55db Silver	1

Catering Equipment Preparation



Stick Blenders

Suitable for light commercial use. 2 Speed Motor 14500 & 18500 rpm. Will blend up to 5 Ltrs. Stainless steel blade. Dimensions: 406mm H x 113mm Dia. Dimensions: Shaft Length 150mm.

Code	Description	Pack
NC2551	Waring Stick Blender 175W	1

Shaft detaches for easy cleaning. Heavy duty motor and stainless steel attachments designed for food service applications. 23cm stainless steel shaft reaches into deep pots and bowls. 2 speeds for blending, pureeing, emulsifying & whipping. Convenient storage hook. Dimensions: 445mm H x 76mm Dia. Dimensions: Shaft Length 230mm

Code	Description	Pack
NC2671	Hamilton Beach Stick Blender 175W	1

Speed: 2000-12500rpm
Variable speed button is positioned at the top for greater visibility and easier adjustment. Stainless Steel knife, bell disc and tube. Foot equipped with a 3 level watertight system. Length 160 mm

Code	Description	Pack
RC2572	Robot Coupe Mini MP160 V V Stick Blender 220 W	1

Speed: 2000-12500rpm
Variable speed button is positioned at the top for greater visibility and easier adjustment. Stainless Steel knife, bell disc and tube. Detachable tube and blade assembly for perfect hygiene. Length 240 mm

Code	Description	Pack
RC2573	Robot Coupe Mini MP240 V V Stick Blender 270 W	1

Speed 9500rpm
Ergonomic handle for a better user experience. Lug on the motor housing serves as a rest and pivot on the rim of a pan New power cord winding system for tidy storage and optimum lifespan. Detachable power cord. Over moulded blade to ensure perfect hygiene. Removable foot and knife for easy cleaning, perfect hygiene and easy maintenance. Stainless steel tube, bell and knife for a longer life.

Code	Description	Pack
RC2599	Robot Coupe MP450 Ultra Stick Blender	1



Bar Blenders

Two Speeds - Offers versatility and precision blending for a wide variety of food and drink mixtures. High/low/off toggle switch is easy to reach and control. Four durable stainless steel blades are made to last and get the job done fast. Large break-resistant 1.25 L polycarbonate container with filler-cap and easy-to-read measurement marks makes filling and pouring easy. Dimensions: 387(h) x 165(w) x 203(d)mm.

Code	Description	Pack
NC2663	Hamilton Beach 908 Bar Blender 1.25 Ltr	1



2 speed motor with pulse. Wave-Action™ system continually forces mixture down into the blades. 1/2 Hp motor provides ample power and torque. High/low and on/off/pulse toggle switches are easy to reach and control. Durable stainless steel container with easy-to-read measurement marks. Dimensions : 406(h) x 165(w) x 203(d)mm. Warranty : 2 Years Parts & Labour

Code	Description	Pack
NC2661	Hamilton Beach Rio Bar Blender 1.25 Ltr	1

1 Hp motor provides ample power and torque. Timer & Two Speeds with Pulse Option. Timer automatically turns blender off after a pre-set time. All-metal drive coupling is built to last. Ideal for blending ice with drinks. Great for cocktails & smoothies. Wave-Action™ system continually forces mixture down into the blades. Break-resistant polycarbonate 1.3 L Container with easy-to-read measurement marks. Dimensions: 432(h) x 154(w) x 229(d)mm. Warranty: 2 Years Parts & Labour

Code	Description	Pack
NC2665	Hamilton Beach Tango Bar Blender 1.3 Ltr	1



3 Hp motor with all-metal drive coupling. Wave-Action® system provides super-smooth drink profile, every time. Powerful precision blending with pulse action. Precision blending for a wide variety of drinks. Timer & two speeds with pulse option. Stackable 1.8L container, break-resistant polycarbonate with easy-to-read measurement marks. Removable dosing cup. 2 speeds plus pulse button. Sure Grip™ feet prevent skidding. Durable stainless steel blades. Four stainless steel blades are made to last & get the job done fast.

Code	Description	Pack
NC2667	Hamilton Beach Fury High Performance Blender	1

Robot Coupe Vegetable Preparation Machines

Space saving and compact table-top model designed for a wide range of cut. Speed: 1500 rpm. Caters for up to 80 covers. Removable bowl & lid for easy cleaning. Magnetic safety system and motor brake. Equipped with a half-moon hopper and a cylindrical hopper. Ideal for slicing, grating and julienne. Discs not included; please order separately. Dimensions: 545(h) x 217(w) x 301(d)mm.

Immensely strong, durable, and easy to clean. Speed: 375 rpm. Caters for up to 300 covers. New easy to clean lid shape eliminates nooks and crannies where food residue could accumulate. All parts which come into contact with foodstuffs can easily be removed for cleaning, thus maintaining the highest standards of hygiene. Magnetic safety system and motor brake. All metal hopper. Ideal for slicing, grating, dicing, shredding, julienne and chipping. Discs not included; please order separately. Dimensions: 590(h) x 350(w) x 320(d)mm.

Code	Description	Pack
RC2579	CL20 Veg Prep Machine 500W	1

Discs for CL20 Veg Prep Machine

RC2579A	Grating 2mm	1
RC2579B	Grating 6mm	1
RC2579C	Slicing 1mm	1
RC2579D	Slicing 3mm	1
RC2579E	Slicing 5mm	1
RC2579F	Julienne 4 x 4mm	1

Code	Description	Pack
RC2581	CL50 Veg Prep Machine 550W	1

Discs for CL50 Veg Prep Machine

RC2581A	Grating 2mm	1
RC2581B	Grating 7mm	1
RC2581C	Slicing 1mm	1
RC2581D	Slicing 3mm	1
RC2581E	Slicing 5mm	1
RC2581F	Julienne 4 x 4mm	1
RC2591	Dicing Set 20 x 20 x 20 mm	1



This is just a small selection of available discs please contact us for full details.



Robot Coupe Blixer

Combined blender/mixer ideal for all types of mixing & liquidising operations. Speed: 3000 rpm. Stainless steel 3.7 litre bowl with handle. Fine serrated stainless steel blade included. Built in bowl & lid scraper. Dimensions: 420(h) x 210(w) x 330(d)mm.

Code	Description	Pack
RC2583	Blixer 3 750W	1



Robot Coupe Vegetable Preparation Machines continued

Robot Coupe Bowl Cutter

Ideally suited to liquidising, making pates, soups etc. and all types of mixing and liquidising operations. Speed: 1500 rpm. Pulse function. Stainless steel 2.9 litre bowl with handle. Smooth blade stainless steel knife included. Dimensions: 350(h) x 200(w) x 280(d)mm.

Code	Description	Pack
RC2585	R2 Bowl Cutter 550W	1



Robot Coupe Food Processors

Industrial induction motor for heavy duty use guarantees durability and reliability.

Speed: 1500 rpm. Caters for up to 70 covers.

R301 has a 3.7 litre ABS cutter bowl R301 Ultra has a 3.7 litre Stainless Steel cutter bowl. Standard smooth-edged blade assembly with removable cap. The new vegetable preparation attachment, common to both the R 301 and R 301 Ultra models, consists of a lidded vegetable preparation bowl. Both the bowl and the lid can be removed for cleaning. Both the R301 and R301 Ultra easily chop, grind, knead and mix.

Both models now have pulse function. Discs: 2mm and 4mm slicer & 2mm and 6mm grater. Other discs available. Dimensions: 550(h) x 220(w) x 340(d)mm.

Code	Description	Pack
RC2565	R301 Food Processor 650W	1

Code	Description	Pack
RC2567	R301 Ultra Food Processor 650W	1



Discs for R301 Food Processors

RC2579D	Slicing 3mm	1
RC2579E	Slicing 5mm	1
RC2579G	Slicing 6mm	1
RC2579H	Grating 3mm	1
RC2579B	Grating 6mm	1

Discs for R301 Food Processors continued

RC2579J	Julienne 2 x 2mm	1
RC2579F	Julienne 4 x 4mm	1
RC2579K	Julienne 6 x 6mm	1
RC2579L	Parmesan	1
RC2579M	Potatoes	1

This is just a small selection of available discs please contact us for full details.

Metcalfe Mixer

Head lifts for easy bowl and tool removal.
Removable 5Ltr stainless steel bowl.
Beater, whisk and dough hook.
Constant mixing with step-less speed control.
Variable speed DC motor.
Gear drive, planetary transmission.
Overload protection (NVR device).
Wire safety guard to allow easy addition of liquid to the mixer bowl.
Dimensions: 410(h) x 240(w) x 410(d)mm.



Code	Description	Pack
MF2595	Metcalfe SM5 Mixer	1



Kitchen Aid Mixer

Heavy duty commercial model with bowl cover and pouring shield.
Supplied with flat beater, dough hook and wire whisk.
10 speed gearbox.
Large capacity 4.8 litre stainless steel bowl with a pouring shield.
Supplied with flat beater, dough hook and wire whisk.
Includes two bowl covers.
Overload reset buttons.
Dimensions 411(h) x 264(w) x 338(d)mm.
Power Type 315W, 230V, 1.4 Amp single phase.
12 months commercial warranty.

Code	Description	Pack
NE2535	Kitchen Aid Mixer K5 315W	1

Vollrath Floor Mixer

Powerful and reliable, this 30 Litre Floor Standing Planetary Mixer is ideal for saving time when processing large quantities of mix.
A heavy duty commercial kitchen workhorse, the mixer features a hugely powerful three speed motor.
Supplied with a solid dough hook, a sturdy wire whisk and a robust flat beater.
The bowl is raised and lowered using the manual handle mechanism.
1216(H) x 635(W) x 622(D) mm
Warranty 2 Years Parts & 1 Year Labour.
5 Year Warranty on Drive Belt.

Code	Description	Pack
MF2605	Vollrath Floor Mixer 30 Ltr	1



Vollrath Countertop Mixers



Three speed transmission. Safety cut-switch automatically turns the unit off if gears are changed without stopping the mixer. Features a 30 minute timer - mixer automatically stops when timer ends. No .12 hub accommodates optional Meat Grinder and Vegetable Slicer attachments for flexibility between grinding, slicing, and mixing. Supplied with a stainless steel mixing bowl, dough hook, spatula, and wire whisk.
Dimensions: 905(h) x 518(w) x 518(d)mm.
Warranty: 2 Years Parts & 1 Year Labour.
5 Year warranty on drive belt.

Code	Description	Pack
MF2603	Vollrath Counter Top Mixer 20 Ltr	1

These countertop mixers are designed specifically for small commercial mixing applications. Compact enough to fit into any kitchen yet robust enough for continuous use. With five mixing speeds it can be catered to your specific batch mixing needs. Digital control panel to make easy speed shifts while unit is running. Compact design for smaller footprint, easier cleaning, and portability. Non-skid rubber base.
Supplied with a stainless steel mixing bowl, dough hook, spatula, and wire whisk. Dimensions: 538(h) x 332(w) x 538(d)mm.
Warranty: 2 Years Parts & 1 Year Labour.
5 Year warranty on drive belt.

Code	Description	Pack
MF2601	Vollrath Counter Top Mixer 10 Ltr	1



Cooked Meat Slicers

Reliable ventilated motors allow these slicers to run non-stop for 7 hours. Adjustable thickness of cut for precision slicing.
Built-in blade sharpener allows you to keep blades sharp for the perfect cut.
Permanently-mounted knife guard for safety.
Large distance between blade and machine body for easy cleaning.

Code	Description	Pack
KR3035	Heavy Duty Meat Slicer 30cm Blade Size 300mm 12". Motor 210w / 0.30hp Cut Size 0 - 30mm Dimensions: 495(h) x 495(w) x 640(d)mm	1



Code	Description	Pack
KR3031	Medium Duty Meat Slicer 25 cm Blade Size 250mm. Motor 125w / 0.20hp Cut Size 0 - 13mm Dimensions: 475(h) x 570(w) x 560(d)mm	1
KR3033	Medium Duty Meat Slicer 30 cm Blade Size 300mm 12". Motor 125w / 0.20hp Cut Size 0 - 13mm Dimensions: 510(h) x 640(w) x 610(d)mm.	1

Potato Peeler

Bench model potato peeling machine constructed from non-corrosive aluminium alloy castings, with the spindle housing and chute cast integrally, eliminating joints and possible leakage. It can be mounted on sink sides or our optional tubular pedestal, or mobile trolley. Complies with all relevant safety standards, and is designed for ease of maintenance and cleaning.



Code	Description	Pack
MF2611	Metcalfe Potato Peeler 4.5kg (10lb)	1
MF2617	Potato Peeler Installation Kit Kit includes: Water inlet hose 91cm, tap connector, Length of waste pipe, elbow, coupling and sink skip	1

Economy Bag Sealers

For perfect sealing of PE/PP/PVC films up to 800 gauge in two layers. Includes a cutter; can be used to trim or make bags from lay flat tubing when paired with film unroller. Warranty is 12 months, excluding consumable parts.



Code	Description	Pack
RP2570	Bag Sealer 20cm 350 Watt	1
RP2570A	Bag Sealer 20cm Spares Kit Kit includes 1 x Element, 2 x Upper PTFE, 1 x Lower PTFE	1
Code	Description	Pack
RP2573	Bag Sealer 30cm 500 Watt	1
RP2573A	Bag Sealer 30cm Spares Kit Kit includes 1 x Element, 2 x Upper PTFE, 1 x Lower PTFE	1

Domestic Quality Kitchen Machines No Commercial Warranty

Compact and durable, these blenders offer 3 dedicated speeds for folding, mixing and whisking. They feature comfort-fit moulded handles, full safety interlock and wrap-around cable storage. No Commercial Warranty.

Classic white Kenwood Chef. Variable speeds with Pulse Function. Supplied with K-Beater, Dough Tool & Whisk. Stainless Steel Bowl 4.6 Ltrs. Dimensions : 290(h) x 390(w) x 235(d)mm. No Commercial Warranty.



Code	Description	Pack
NE2510	Kenwood Hand Mixer 150 Watt	1
NE2505	Kenwood Hand Mixer 250 Watt	1



Code	Description	Pack
NE2501	Kenwood Chef Mixer 800 Watt	1

Domestic Quality Kitchen Machines No Commercial Warranty - continued

Hanging hook for wall mounting or hanging from a rail. Soft textured grip provides easy operation and user comfort. No Commercial Warranty.



Code	Description	Pack
NE2509	Kenwood Hand Blender/Liquidiser 120 Watt	1

Features serrated, high quality ultra-sharp stainless steel blades for precise and effortless cutting. No Commercial Warranty.



Code	Description	Pack
SW2556	Kenwood Electric Knife	1



Polypropylene Body. Boil Dry Protection Water Level Gauge. Anti Slip Feet Design Cord Storage. Built In Filter. Light Indicator. 220-240V No Commercial Warranty.

Code	Description	Pack
HD2545	Kettle 360 Degree 1.7 Ltr	1



4 speeds Plus Pulse. Stainless Steel Blades Safe Interlock Lid. Removable Filler Cap Transparent Plastic Jug Printed Both Sides For Different Measurements. Cord Storage. Lid Safety System. 220-240V No Commercial Warranty.

Code	Description	Pack
HD2548	Blender Liquidiser 1.5 Ltr	1

Plate Warmer - 90 Plate Capacity 2kW

Thermostatically controlled
3 chrome wire shelves
Stainless steel front and sides
Galvanised back
600 x 375 x 945 mm



Code	Description	Pack
PA1065	Plate Warmer - 90 Plate Capacity 2kW	1

Plate Warmer - 120 Plate Capacity 2kW

Thermostatically controlled
3 chrome wire shelves
Stainless steel front and sides
Galvanised back
600 x 600 x 945 mm



Code	Description	Pack
PA1067	Plate Warmer - 180 Plate Capacity 2kW	1

Catering Equipment Presentation



Seal Refrigerated Displays

Holds food at 3 °C - 7 °C in ambient conditions up to 32 °C and 70% relative humidity. Double-glazed front and sides for extra energy efficiency and low running costs. R404a refrigerant is energy-efficient and non ozone-depleting, so kinder to the environment. All-round visibility to maximise food sales potential. Precise thermostatic control of cabinet temperature with digital display and high/low temperature warning. Hot gas automatic defrost allows continuous operation with no loss of cabinet temperature, for enhanced food safety. Suitable for back-service applications. Adjustable shelf heights.

Code	Description	Pack
LC9111	350 Range Refrigerated Display	1

Dimensions : 575(h) x 1000(w) x 350(d)mm.



Code	Description	Pack
LC9113	500 Range Refrigerated Display	1

Dimensions : 575(h) x 1000(w) x 500(d)mm.



Seal Food Merchandisers

Elegant extruded aluminium frames and metallic silver finish. Minimum food holding temperature of 72 °C. Thermostatic control up to 95 °C. Humidity feature prevents food drying out. Switchable heat control allows cabinet to be used as an ambient display. Adjustable shelf heights. All-round visibility to maximise food sales potential.

Code	Description	Pack
LC9105	350 Range Heated Display	1
Suitable for back-service applications		
Dimensions: 575(h) x 750(w) x 350(d)mm.		
LC9107	500 Range Heated Display	1
Self Service		
Dimensions: 575(h) x 500(w) x 750(d)mm.		
LC9109	500 Range Heated Display	1
Back Service		
Dimensions: 575(h) x 500(w) x 1000(d)mm.		
Adjustable shelf heights in back service models		



Rollergrill Heated Display Cabinet

2 shelves 600mm x 400mm.
Ventilated firestone heating system.
Electronic thermostat 20-90°C.
Humidity control to keep products moist and delicious.
LED "white light" in each corner.
Rear doors open flat to give clear access to the cabinet.

Code	Description	Pack
RG4091	Heated Display	1

Dimensions: 750(w) x 460(h) x 360(d)mm.



Panther Mobile Hotcupboards

Fan assisted hot cupboard provides even heat distribution, fast heat up and recovery times, and lower energy usage. Supplied with two heavy duty multi-section chrome plated rod shelves capable of taking the heaviest loads. Four shelf positions allow adjustment to meet individual needs. Accurate digital electronic control of the hot cupboard temperature, adjustable between 20 and 99 degrees C, ensures compliance with food hygiene regulations.

Code	Description	Pack
LC9211	Plain Top Hotcupboard	1
Dimensions: 900(h) x 900(w) x 670(d)mm.		
LC9213	Plain Top Hotcupboard	1
Dimensions: 900(h) x 1125(w) x 670(d)mm.		



Code	Description	Pack
LC9215	Bain Marie Top Hotcupboard	1
Dimensions: 900(h) x 900(w) x 670(d)mm.		
LC9217	Bain Marie Top Hotcupboard	1
Dimensions: 900(h) x 1125(w) x 670(d)mm.		

Glass Display Cabinet

Toughened safety glass throughout with sturdy 10mm thick base glass and strong stainless steel shelf support brackets for extra rigidity. Removable sliding rear doors. 6mm thick removable shelves safe and easy to clean. Generous 150mm shelf height for versatile display of food and non-food items. Good all-round visibility and polished glass edges. Non-slip rubber feet for extra safety and security.

Code	Description	Pack
LC9119	Glass Display Cabinet	1

Dimensions: 490(h) x 600(w) x 350(d)mm.



Catering Equipment Refrigeration



Gram Refrigeration

Compact Fridges

The Award winning Compact 410 models are versatile refrigerators & freezers designed for storing products in commercial workplaces. The Cabinets are spacious, despite only being 60cm wide and 64cm deep. Listed on The Carbon Trusts Energy Technology List. Equipped with a right hand hinged reversible door with lock and 6 shelves and castors. Exterior / Interior: Stainless / ABS lining in grey / White / ABS lining in white. Gross Volume: 346 ltr. Dim. 595(w) x 640(d) x 1900mm(h). Warranty 5 years on-site parts and labour.

Code	Description	Pack
AP6221S	Gram Compact S/Steel Fridge K410 346 Ltr.	1
AP6221W	Gram Compact White Fridge K410 346 Ltr.	1

Temperature range: +2°C to +12°C
Power consumption: 0.6 kWh/24h
Refrigerant: R 600 a (isobutane)
Connection: 230 V, 50 Hz
Connection load: 103 Watt



Compact Freezers

Code	Description	Pack
AP6231S	Gram Compact S/Steel Freezer K410 346 Ltr.	1
AP6231W	Gram Compact White Freezer K410 346 Ltr.	1

Temperature range: -22 / -5°C
Energy consumption w/door closed 1.6kWh/24h
Refrigerant: R 600 a (isobutane)
Connection: 230 V, 50 Hz
Connection load: 142 Watt
Power consumption: 1.6 kWh/24h



Snowflake Fridges & Freezers

Economical in their energy usage and design, Snowflake units are an affordable solution to the need demand for reliable, efficient refrigerated storage. Right hand hinged reversible door with lock, 3 grey shelves. Height: 2000 mm incl. castors. Exterior/Interior: Stainless/Stainless. Warranty period 2 Years parts & Labour.

Code	Description	Pack
AP4215	Snowflake Freezer 594 Ltr.	1

Temperature range: -22 / -10°C
Energy consumption w/door closed 4.0kWh/24h (R290)
Refrigerant: R290 or R404A
Connection: 230 V, 50 Hz
Connection load: 453 Watt

Code	Description	Pack
AP4211	Snowflake Fridge 594 Ltr.	1

Temperature range: +2 / +8°C
Energy consumption w/door closed 1.2kWh/24h (R290)
Refrigerant: R290 or R134a
Connection: 230 V, 50 Hz
Connection load: 278 Watt



Foster Refrigeration

Foster XR 415H Xtra Economy Refrigerator (+2°/+8°C)

Capacity - 600 litres
 Number of shelves - 3 (GN 2/1)
 Standard Finish - Stainless steel exterior/Aluminium interior
 Lockable Door
 Auto Defrost
 Thick insulation and fan assisted cooling improve temperature performance.
 Refrigeration system maintains cabinet storage temperature in hot kitchens.
 Gastronorm shelving is supplied.
 Easy to use and read microprocessor controller providing simple accurate temperature control.
 Adjustable Gastronorm shelving allows storage flexibility.
 Removable gasket for ease of maintenance.
 Easy to read digital controller.
 ISO Climate Class 5 - Operates efficiently in ambients up to 43°C
 British manufactured, ensuring build quality and product availability for immediate delivery
 Dimensions - 1958 (h) x 675 (w) x 850 (d) (mm)
 Warranty - 2 Years Parts and labour

Code	Description	Pack
FR4211	Foster XR 415H Xtra Economy Refrigerator (+2°/+8°C)	1



Foster XR 600 L Xtra Freezer (-18°/-21°C)



Capacity - 600 litres
 Number of shelves - 3 (GN 2/1)
 Standard Finish - Stainless steel exterior/Aluminium interior
 Auto Defrost
 Lockable Door
 Thick insulation and fan assisted cooling improve temperature performance
 Refrigeration system maintains cabinet storage temperature in hot kitchens
 Gastronorm shelving is supplied
 Easy to use and read microprocessor controller providing simple accurate temperature control
 Adjustable Gastronorm shelving allows storage flexibility
 Fuzzy Logic II touch sensitive control panel with high visibility temperature display and audible hi/lo alarm
 Removable gasket for ease of maintenance
 ISO Climate Class 5 - Operates efficiently in ambients up to 43°C
 British manufactured ensures build quality and product availability for immediate delivery
 Dimensions - 1958 (h) x 675 (w) x 850 (d) (mm)
 Warranty - 2 Years Parts and labour

Code	Description	Pack
FR4215	Foster XR 600 L Xtra Freezer (-18°/-21°C)	1

Foster EP 700 H EcoPro G2 Refrigerator (+1°/+4°C)

Capacity - 600 litres
 Number of shelves - 3 (GN 2/1) Nylon coated
 Standard Finish - Stainless steel exterior/Aluminium interior
 Hydrocarbon as standard, other refrigerant options available on this machine.
 Lockable Door
 Auto Defrost
 ISO Climate Class 5 - Operates efficiently in ambients up to 43°C
 +stayclear condenser, improves airflow and significantly reduces dust build-up and blockages
 Door hinged on right as standard
 Fuzzy Logic II touch sensitive control panel with high visibility temperature display and audible hi/lo alarm
 Thermal break and door heater
 Circular II air distribution system to maximise efficient operation
 Dimensions - 2080 (h) x 700 (w) x 820 (d) (mm)
 Warranty - 2 Years Parts and Labour

Code	Description	Pack
FR4221	Foster EP 700 H EcoPro G2 Refrigerator (+1°/+4°C)	1



Foster EP 700 L EcoPro G2 Freezer (-18°/-21°C)



Capacity - 600 litres
 Number of shelves - 3 (GN 2/1) Nylon coated
 Standard Finish - Stainless steel exterior/Aluminium interior
 Hydrocarbon as standard, other refrigerant options available on this machine.
 Lockable Door
 Auto Defrost
 Fuzzy Logic II touch sensitive control panel with high visibility temperature display and audible hi/lo alarm
 ISO Climate Class 5 - Operates efficiently in ambients up to 43°C
 +stayclear condenser, improves airflow and significantly reduces dust build-up and blockages
 Door hinged on right as standard
 Dimensions - 2080 (h) x 700 (w) x 820 (d) (mm)
 Warranty - 2 Years Parts and Labour

Code	Description	Pack
FR4225	Foster EP 700 L EcoPro G2 Freezer (-18°/-21°C)	1

Catering Equipment Warewashing



Maidaid Dishwashers

Maidaid have a wealth of experience gained over 40 + years as leaders within the industry. Their machines have a longstanding reputation for durability, reliability and serviceability. Whether you want simple reliability or the very latest innovations in micro processing, there is a machine for every application. Stainless steel tables not included - available separately.



PLEASE
CALL FOR
PRICING
0121 433 3651

C515WSD Undercounter Dishwasher

- 2 year warranty
- Standard internal automatic water softener & drain pump
- Type AA breaktank
- Bright LED display with soft touch controls
- Accurate detergent and rinse aid dosing as standard
- Cycle times between 70 & 240 secs, including special cycles
- Cycle time can be tailored to site requirements
- Selectable energy saving mode
- Selectable thermostat ensures optimum rinse temperatures
- Automatic self-cleaning at end of service
- Surface scrap tray filters
- Operational self-diagnostics
- Twin traffic light display indicates machine status
- Wash temperature 60°C (adjustable)
- Rinse temperature 78°C (adjustable)
- 500 x 500 mm basket, racks included: (1) open, (1) plate
- Dimensions W580 x D610 x H815 mm
- Height excludes adjustable feet which will add 10 - 20 mm
- Power 2.6/4.5/6.5kW - 13/20/30 Amps required

C1035WS Passthrough Dishwasher

- 2 year warranty
- Internal Continuous Water Softener
- Soft touch controls with bright LED display
- Fitted with breaktank
- Both detergent and rinse aid dosed by reliable peristaltic pumps
- Drain pump fitted as standard
- Double flow wash pump for improved wash performance and power efficiency
- Twin traffic lights give indication of machine status
- Three standard cycle options plus special applications cycle
- Automatic self-cleaning cycle
- Supplied with one plate, one open rack and cutlery basket
- Dimensions W640 x D740 x H1450mm
- Height adjustable from 1450 to 1510mm (hood closed)
- From 1885 to 1940mm (hood open)
- Three selectable cycles ranging from 70-240 secs
- Power 6.5/4.5kW - 20/30 amps required
- Wash temperature 60°C (adjustable)
- Rinse temperature 78°C (adjustable)
- Can be supplied 3 phase

PLEASE
ASK ABOUT
INSTALLATION
0121 433 3651

Warewashing Accessories

Open Rack

Code	Description	Pack
CB7109	50 x 50cm	1

Bottom grid allows for free flow of water and air. Keeps flatware in place for thorough washing and drying.



Flatware Basket

Code	Description	Pack
CB7114	8 Section	1

Open design for easy cleaning of vertically stored flatware. Lightweight, yet tough and resilient.



Cup Racks

Code	Description	Pack	Code	Description	Pack
CB7101	16 Compartment	1	CB7104	20 Compartment	1

Tilted design promotes thorough washing of rims and interiors. Encourages bases to drain more efficiently. 16-Compartment holds larger diameter cups and mugs in tilted position. 20-Compartment works with most standard size cups. 50 x 50 cm. Holds cups up to 6.6 cm high.



9 x 9 Peg Rack

Code	Description	Pack
CB7105	50 x 50cm	1

Holds plates, smaller trays, and platters at the best angle to take full advantage of multiple spray, high pressure dishwashers. Plate locks hold dishes firmly in place to protect delicate rims, reduce chipping and breakage. All purpose plate & tray rack.



Tumbler and Stemware Racks

Code	Description	Pack	Code	Description	Pack
CB7103	36 Compartment Max. Dia. 6.8cm Max Ht. 12cm	1	CB7119	49 Compartment Max. Dia. 5.4cm Max Ht. 16cm	1
CB7129	36 Compartment Max. Dia. 6.8cm Max Ht. 17cm	1	CB7121	49 Compartment Max. Dia. 6cm Max Ht. 20cm	1

Use with tumblers, white wine glasses, and other narrow bowl stems.

Ideal for juice glasses, narrow champagne flutes, cordials and shot glasses.



Dishrack Accessories

Code	Description	Pack	Code	Description	Pack
CB7123	Full Rack Cover 50 x 50cm	1	CB7127	Dishrack Hold Down Grid	1

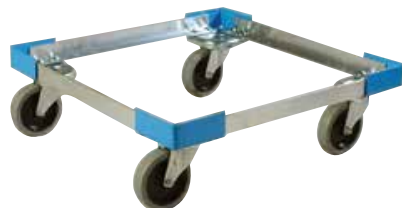
Create a self contained, portable sanitary storage system by stacking dishracks on dollies and covering with full rack covers.



Please contact our sales office for further information regarding our range of warewashing products as this is just a small selection of the products available.

Code	Description	Pack
CB7125H	Open Dish Rack Dolly With Handled	1

Code	Description	Pack
CB7125	Open Dish Rack Dolly	1

Catering Equipment
Transportation

Food & Beverage Transportation

Rubbermaid Top Loading Gastronorm Carrier
Lightweight and stylish design.
Rigid construction allows carriers to be stacked.
Durable nylon exterior resists tearing and staining.
Commercial dishwasher safe.
Pan Capacity 5 ea 65mm or 3 ea 100mm deep pans
Dimensions: 495(h) x 489(w) x 711(d)mm.

Light & durable. Easy to clean. No pre heating required. Stackable. Designed to carry B & S (Grundy Tins); 32mm Deep, stack 7 high. 45mm Deep, stack 5 high, 57mm Deep stack 4 high, 83mm Deep stack 3 high.
Dimensions: 360(h) x 550(w) x 360(d)mm.

Code	Description	Pack
TB3763	Insulated Transport Bag - G/Norm	1

Code	Description	Pack
CD3761	Grundy Front Loader	1

Food & Beverage Transportation *continued*

Eco Thermo Boxes are very durable yet lightweight. They are hygienic, dishwasher-proof and have a temperature range from - 40 to + 120 °C. These boxes are especially made for secure transport of hot, cold and fresh food. They are made of Expanded Polypropylene (no Styrofoam). They have an airtight lid with raised edges on the boxes. Stackable with integrated handles for safety and comfort. Contoured internally for easy removal of hot and/or heavy pans. They are best used with Full Size, Half Size & 1/3 Size Gastronorm Pans which can be securely stacked inside the boxes.

Code	Description	Pack
CV3613	Thermo Box 1/2 Size x 257 mm Deep	1
CV3601	Thermo Box 1/1 Size x 167 mm Deep	1
CV3603	Thermo Box 1/1 Size x 217 mm Deep	1
CV3605	Thermo Box 1/1 Size x 257 mm Deep	1



Camcarrier UPCS140/160/180

Durable polypropylene construction. Light weight. Polyurethane injected foam insulated. Built-in seal and wide nylon latches for better temperature retention. Moulded-in handles on all four sides. Stackable. Transport full or fractional GN food pans. Interlock and stack to ease transporting and maximize storage space. Image shows optional transport trolley.

Code	Description	Pack
CB3731	Camcarrier UPCS140 Capacity 1 ea 1/1 x 100mm (or divisions of)	1
CB3733	Camcarrier UPCS160 Capacity 1 ea 1/1 x 150mm (or divisions of)	1
CB3734	Camcarrier UPCS180 Capacity 1 ea 1/1 x 200mm (or divisions of)	1
CB3730	Camdolly (transport trolley)	1



Camcarrier 300MPC

Rugged and versatile insulated food pan carriers have individual track for each food pan. A favorite of caterers for its compact size and ability to hold hot or cold food for 4+ hours, the 300MPC neatly fits in the back of small cars.

Code	Description	Pack
CB3725	Camcarrier 300MPC	1
CB3751	Camdolly (transport trolley)	1



Holding capacity, full size pans
4 ea 65mm deep
3 ea 100mm deep
2 ea 150mm deep
1 ea 200mm deep

Also holds third and half size pans.



OUT NOW!



OUT NOW!



OUT NOW!



OUT NOW!

Food & Beverage Transportation continued

Ultra Camtainer

Perfect for off premises catering and banquets. Keep beverages hot or cold for hours. One piece, seamless double-wall polyethylene with thick foam insulation.

Code	Description	Pack
CB3711	Ultra Camtainer 10.4 Ltr.	1
CB3713	Ultra Camtainer 19.9 Ltr.	1
CB3709	Ultra Soup Container 12.7 Ltr.	1



Camcarrier UPCS400

Ultra dependable, ultra durable end-loading pan carrier. Holds multiple pans of hot or cold food for hours. Rugged polyethylene shell and thick, polyurethane foam insulation.

Built-in seal and vent ease cleaning and reduce replacement parts. Built-in menu clip offers quick content labelling and identification. Unbreakable, ergonomic, moulded-in handles for comfortable two-person carrying. Single, 23 cm wide latch provides quick and secure opening and closing. Optional caster kit available.

Code	Description	Pack
CB3735	Camcarrier UPCS400	1
CB3735A	Optional Castor Kit	1

Holding Capacity, Full Size pans
6 ea 65mm deep, 4 ea 100mm deep,
3 ea 150mm deep, 2 ea 200mm deep
Also holds third & half size pans



Camcart UPC800

Double-compartment, high-capacity carts hold and transport hot or cold food. Tough, polyethylene shell and thick foam insulation. Airtight removable gaskets maintain safe food temperatures for hours. Easy to maintain and won't dent, crack, rust, chip or break. Durable nylon door latches open easily and close securely. Full-swing doors open to the side of the cart for easy loading and unloading. Moulded-in handles ensure easy manoeuvring. Moulded-in bumpers minimize damage to walls, furniture and other equipment. Heavy duty 15.2 cm castors, 2 rear fixed, and 2 front swivel, one with brake.

Code	Description	Pack
CB3739	Camcart UPC800	1

Holding Capacity, Full Size pans
12 ea 65mm deep
8 ea 100mm deep
6 ea 150mm deep
4 ea 200mm deep
Also holds third & half size pans



Camcart UPC1600

Code	Description	Pack
CB3741	Camcart UPC1600	1

Holding Capacity, Full Size pans
 24 ea 65mm deep
 16 ea 100mm deep
 12 ea 150mm deep
 8 ea 200mm deep
 Also holds double size pans



Hot Holding Insulated Transportation

Enables HACCP compliance by maintaining safe, hot food temperatures. Gentle, 65°-74°C heat will not cook food and maintains food moisture. 45-minute preheat time from room temperature. Three minute recovery after the door is opened and closed. Non corrosive heating unit. Uses less energy than three standard 100 watt light bulbs. Tough, polyethylene exterior stays cool to the touch. Thick foam insulation retains temperatures for hours, even when unplugged. Single 23cm latch on each door provides quick and secure opening & closing. Perfect for frequent opening & closing and extreme cold ambient temperatures. Removable cord stows securely for transport. Built in thermometer that's easily removed for cleaning.

Code	Description	Pack
CB3735H	Heated Camcarrier UPCH4002	1

Holding Capacity, Full Size pans
 6 ea 65mm deep
 4 ea 100mm deep
 3 ea 150mm deep
 2 ea 200mm deep
 Also holds third & half size pans



Code	Description	Pack
CB3739H	Camcart UPCH8002	1

Holding Capacity, Full Size pans
 12 ea 65mm deep
 8 ea 100mm deep
 6 ea 150mm deep
 4 ea 200mm deep
 Also holds third & half size pans



Code	Description	Pack
CB3741H	Camcart UPCH16002	1

Holding Capacity, Full Size pans
 24 ea 65mm deep
 16 ea 100mm deep
 12 ea 150mm deep
 8 ea 200mm deep
 Also holds double size pans

Accessories for Food Transportation Units

An easy to use, cold food holding temperature tool. Keep in cabinet with cold foods to ensure they are safely held below 5 °C. Freeze overnight then use to pre-chill cabinet before loading up.

Code	Description	Pack
CB3500	Camchiller	1



Use for added insurance to keep hot foods hot during holding and transporting. Store in cabinet with hot foods to ensure food remains above 60 °C. Can also be used to pre-warm empty cabinet before loading. Use one or two per compartment. Place on bottom rail and store hot food above.

Code	Description	Pack
CB3525	Camwarmer	1



Thermo Barrier

A highly valuable yet economical temperature maintenance tool for caterers. Use to separate hot and cold food held within the same compartment. Or use to minimize empty space and food temperature loss within a partially loaded compartment. Can also be used to separate full and empty food pans held in the same compartment.

Code	Description	Pack
CB3735A	Thermo Barrier Fits UPCS400 & UPC800	1
CB3741A	Thermo Barrier Fits UPC1600	1



Lockers

All of our lockers are designed and manufactured in the UK. Fitted with hat shelf and double coat hook. Integral air vent system. Quality cam lock (fitted as standard) supplied with 2 keys per lock. Welded front frame & internal door strengtheners. Finished with "Active Coat" anti-bacterial technology which is hard wearing, hygienic and anti-bacterial. Found to be 99.9% effective against MRSA, E-coli and Bacteria for the life of the coating. Dimensions: 1780(h) x 305(w) x 380(d)mm.

Code	Description	Pack	Code	Description	Pack
LK1501	Single Door Locker Grey	1	LK1507	Double Door Locker Grey	1
LK1503	Single Door Locker Blue	1	LK1509	Double Door Locker Blue	1
LK1505	Single Door Locker Red	1	LK1511	Double Door Locker Red	1



We have a full range of lockers in various colours available, please contact us for details

Catering Equipment Trolleys & Shelving



General Purpose Trolleys

Quality stainless steel construction for long life. Supplied fully welded - no assembly required. 4 heavy duty castors - 2 with brake. Bumpers fitted all round to help avoid damage to walls etc.

Code	Description	Pack
GR1688	Stainless Steel 2 Tier	1
GR1689	Stainless Steel 3 Tier	1
GR1692	Stainless Steel 5 Tier	1
2 Tier & 3 Tier 835(h) x 535(w) x 930(l)mm		
5 Tier 1554(h) x 600(w) x 900(l)mm		



Quality stainless steel construction for long life. Supplied flat packed - easy assembly tools included. 4 heavy duty castors - 2 with brake. 4 bumpers supplied to help avoid damage to walls etc.

Code	Description	Pack
NV1688	Stainless Steel 2 Tier - Flat Packed	1
NV1689	Stainless Steel 3 Tier - Flat Packed	1
2 Tier & 3 Tier 835(h) x 535(w) x 930(l)mm.		

Utility Trolleys

Optional clip-on Cutlery & Refuse Bins available. Quiet mark-resistant castors. Tough polypropylene shelves. Easy to clean. Image shows Refuse Bin & Cutlery Bin which are available separately.

Code	Description	Pack
CB3352	Light Duty Service Cart 910(h) x 410(w) x 813(l)mm.	1
CB3354	Light Duty Service Cart - Large 910(h) x 495(w) x 1035(l)mm.	1
CB3355	Clip-On Refuse Bin 560(h) x 245(w) x 335(l)mm.	1
CB3356	Clip-On Cutlery Bin 178(h) x 245(w) x 330(l)mm.	1



Image shows optional Refuse Bin & Cutlery Bin

www.wvhowe.co.uk - **Order Online** 45

Rubbermaid Utility Carts

Durable and attractive carts function in front and back of house applications. Textured surface on all shelves to resist scratching. Made of tough structural web construction for durability; resists chips & dents. Quiet 10cm non-marking swivel castors and plastic construction help eliminate noise. User-friendly easy to grip handles. Easy to assemble. Rounded corners for easy cleaning. Convert any of the carts to an attractive efficient clearing trolley with the optional refuse bin & silverware bin.

Code	Description	Pack
RU3731	Light Duty Utility Cart Black	1
RU3731B	Light Duty Utility Cart Blue	1
RU3731G	Light Duty Utility Cart Green	1
RU3731R	Light Duty Utility Cart Red	1
RU3731Y	Light Duty Utility Cart Yellow	1
RU3731P	Light Duty Utility Cart Platinum	1

959(h) x 473(w) x 960(l)mm. Max. Capacity 91 Kg

Code	Description	Pack
RU3739	Refuse Bin Black	1
RU3740	Silverware Bin Black	1

Both bins fit all Rubbermaid utility carts for easy table clearing. Smooth surfaces - easy to clean.



Image shows optional Refuse Bin and Silverware Bin

Code	Description	Pack
RU3734	X-tra Utility Cart Black	1
RU3734G	X-tra Utility Cart Grey	1
RU3734W	X-tra Utility Cart White	1

960(h) x 508(w) x 1032(l)mm.
136 Kg total load capacity



Code	Description	Pack
RU3736	X-tra Utility Cart Enclosed 3 Sides Black	1
RU3736W	X-tra Utility Cart Enclosed 3 Sides Off White	1

Enclosed on 3 sides for secure transportation



Tray Stacking Trolley

Maximum tray size; 56 x 35cm.
Will accommodate standard trays or 2 stacks of sectional meal trays.

Code	Description	Pack
TS3623	Bright Stainless Steel	1
TS3624	Mild Steel With Grey Enamel Finish	1



Tray Clearing Trolleys

Code	Description	Pack
TS3634	Bright Stainless Steel 1 x 12 - Tray Size 41 x 30cm	1
TS3638	Bright Stainless Steel 2 x 12 - Tray Size 41 x 30cm	1
TS3632	Bright Stainless Steel 1 x 12 - Tray Size 46 x 36cm	1
TS3636	Bright Stainless Steel 2 x 12 - Tray Size 46 x 36cm	1
TS3642	Mild Steel With Enamel Finish 1 x 12 - Tray Size 41 x 30cm	1
TS3646	Mild Steel With Enamel Finish 2 x 12 - Tray Size 41 x 30cm	1
TS3640	Mild Steel With Enamel Finish 1 x 12 - Tray Size 46 x 36cm	1
TS3644	Mild Steel With Enamel Finish 2 x 12 - Tray Size 46 x 36cm	1

Supplied with rear stop bars, 4 swivel castors
2 with brake and bumpers fitted all round.



Tray & Cutlery Trolley

Code	Description	Pack
TS3628	Mild Steel With Enamel Finish Supplied with 1 x 4 section cutlery tray as shown.	1



Cutlery Trolleys

Code	Description	Pack
TS3620	Bright Stainless Steel	1
TS3622	Mild Steel With Enamel Finish	1

Supplied complete with 2 x 4 section cutlery trays as shown.



Dish Caddy

Adjustable dividers give flexibility allowing plates from 137mm to 310mm to be stored.
Two handed access to all plates reduces breakage.
Front 12.7cm swivel castors with brake and 25.4cm rear wheels offer smooth transporting.
Vinyl cover included for sanitary storage.
Store or transport your crockery in complete safety.

Code	Description	Pack
CB3757	Adjustable Dish Caddy	1



Jackstack Plate Carrier

Completely mobile on 15cm wheels - 2 with brakes. 50mm spacing between supports. Holds up to 104 plates. Minimum diameter of 12cm (approx. 5"). Maximum diameter of 30cm (approx. 12"). Dimensions: 1790(h) x 600(w) x 600(d)mm.

Code	Description	Pack
MT3855	Jackstack 104	1



Cover available separately

Gastronorm Trolleys

Code	Description	Pack
TS3648	GN 2/1 Trolley (Profile 530 mm) 7 Tier	1
TS3648A	GN 1/1 Trolley (Profile 325 mm) 7 Tier	1
TS3650	GN 1/1 Trolley (Profile 325 mm) 10 Tier	1
TS3650A	GN 1/1 Trolley (Profile 325 mm) 15 Tier	1
TS3650B	GN 1/1 Trolley (Profile 325 mm) 20 Tier	1

**Storage Trolleys**

Ideal for a wide range of food preparation, transport, serving and storage tasks. Specially designed to work with full size, half size & third size gastronorm food pans. The components are made of impact-resistant structural web plastic. Manufactured with soft, rounded corners that are easy on walls, doors and other equipment. Quiet handling and upscale design let workers move food directly from kitchen to dining room for fast restocking without repeated trips. Easy to clean, resists stains and corrosion. All castors are 5" (12.7cm) non-marking swivel plate design - 2 with brake. The versatile Prep Cart can be used as a serving station at a buffet etc.

Code	Description	Pack
RU3835	Gastronorm Storage Trolley/Prep Cart 918(h) x 473(w) x 603(d)mm.	1
RU3837	Gastronorm Storage Trolley 1724(h) x 473(w) x 603(d)mm.	1

Material Handling

Use handle upright for pushing loads or angled for pulling. Handle folds flat for use as a dolly. Large non marking castors for greater stability over all surfaces. Robust construction - will not rust or dent. Load capacity 181Kg

Code	Description	Pack
RU3741	Triple Trolley - Deck Size 82.5 x 51cm	1



Heavy duty rubber castors. Sturdy construction won't dent or rust. Max load capacity 453Kg Deck size 91.5 x 61cm

Code	Description	Pack
RU3839	Heavy Duty Platform Truck	1

**Zinc Chromate Wire Shelving**

Use for general dry storage only. Not for use in refrigerated or wet areas.

Code	Description	Size	Pack
CV3101	Static	900 x 400 x 1675mm High 4 Tier	1
CV3103	Static	1200 x 400 x 1675mm High 4 Tier	1
CV3105	Static	1500 x 400 x 1675mm High 4 Tier	1

This is only a very brief selection of the shelving sizes available.

Please contact us for full details or if you have specific requirements.



Camshelving

The revolutionary shelving system for use in any environment - wet or dry.
Withstands temperatures as low as -38°C.
All weight bearing components manufactured from a steel core coated with a smooth polypropylene exterior.
It's weldless, rustproof and each component is dishwasher safe.
Extremely durable, stable, easy to clean and adjust.

Code	Description	Pack
CB8101	Static 4 Tier Vented Shelves 1000 x 400 x 1700 High	1
CB8103	Static 4 Tier Vented Shelves 1200 x 400 x 1700 High	1

Max. load capacity 363Kg per shelf

Code	Description	Pack
CB8105	Static 4 Tier Vented Shelves 1400 x 400 x 1700 High	1
CB8107	Static 4 Tier Vented Shelves 1600 x 400 x 1700 High	1

Max. load capacity 272Kg per shelf



Code	Description	Pack
CB8109	Mobile 4 Tier Vented Shelves 1000 x 400 x 1690 High	1
CB8111	Mobile 4 Tier Vented Shelves 1200 x 400 x 1690 High	1

Max. load capacity 363Kg per shelf

Code	Description	Pack
CB8113	Mobile 4 Tier Vented Shelves 1400 x 400 x 1690 High	1
CB8115	Mobile 4 Tier Vented Shelves 1600 x 400 x 1690 High	1

Max. load capacity 272Kg per shelf

This is only a very brief selection of the Camshelving sizes available.
Please contact us for full details or for specific requirements

Catering Utensils



Stainless Steel Serving Utensils

Code	Description	Pack
GW3748	Serving Spoon Plain 25cm	1
MJ7205	Serving Spoon Plain 30cm	1
GW3749	Serving Spoon Perforated 25cm	1
MJ7210	Serving Spoon Perforated 30cm	1



Code	Description	Pack
NV3752	One Piece Ladle 5cl 1.5oz	1
MJ7215	One Piece Ladle 11cl 4oz	1
MJ7216	One Piece Ladle 18cl 6oz	1
NV3754	One Piece Ladle 20cl 7oz	1
MJ7217	One Piece Ladle 22cl 8oz	1



Code	Description	Pack
MJ3811	Flan Server	1



Code	Description	Pack
ZD3872	Pea Ladle 6.5cm	1



Code	Description	Pack
MJ3810	Pie Server	1



Code	Description	Pack
MJ7202	Fish/Egg Slice	1



Code	Description	Pack
AM3810	Pie Server - Black Handle	1



Code	Description	Pack
AM3813	Triangle Slotted Turner Black Handle	1



Stainless Steel Serving Utensils continued

Code	Description	Pack
NV9129	Solid Blade Turner 21 x 7.5cm	1



Code	Description	Pack
MJ3813	Serving/Sandwich Tongs 23cm	1



Code	Description	Pack
NV3819	Cake Tongs 21.5cm	1



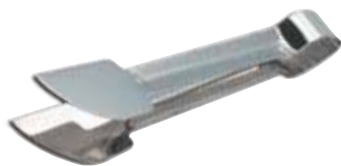
Code	Description	Pack
NV3821	Steak Tongs 52.5cm	1



Code	Description	Pack
GB7081	Two Piece Aluminium Duetto Tongs	1



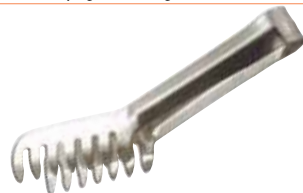
Code	Description	Pack
NV3817	Hamburger Tongs 23.5cm	1



Code	Description	Pack
MT3805	Catering Tongs 20cm	1



Code	Description	Pack
ZD3853	Spaghetti Tongs	1



Code	Description	Pack
NV3827	All Purpose Tongs Black 31cm	1
NV3827B	All Purpose Tongs Blue 31 cm	1
NV3827G	All Purpose Tongs Green 31cm	1
NV3827R	All Purpose Tongs Red 31cm	1
NV3827Y	All Purpose Tongs Yellow 31cm	1



Stainless Steel Serving Utensils continued

Code	Description	Pack
MP3895	Stainless Steel Ice Tong 18cm	1



Code	Description	Pack
MP3652	Portioner Size 12 Green 84 ml	1
MP3652A	Portioner Size 14 Sky Blue 73 ml	1
MP3653	Portioner Size 16 Royal Blue 59 ml	1
MP3654	Portioner Size 20 Yellow 53ml	1
MP3655	Portioner Size 24 Red 45 ml	1
MP3655A	Portioner Size 30 Black 33 ml	1
MP3655B	Portioner Size 40 Orchid 21 ml	1
MP3655D	Portioner Size 50 Terracotta 19 ml	1
MP3655C	Portioner Size 70 Plum 14 ml	1



Code	Description	Pack
NV3823	Aluminium Ice Cream Scoop	1



Code	Description	Pack
NV7078	Balloon Whisk 25cm	1
NV7079	Balloon Whisk 30cm	1
NV7080	Balloon Whisk 36cm	1
NV7081	Balloon Whisk 41cm	1
NV7082	Balloon Whisk 46cm	1



Code	Description	Pack
MJ7203	Chip Scoop	1



Code	Description	Pack
ZD3652	Economy Portioner 2.4oz Size 12	1
ZD3653	Economy Portioner 2.1oz Size 16	1
ZD3655	Economy Portioner 1.8oz Size 24	1



Code	Description	Pack
NV7085	Nylon Handled Balloon Whisk 30cm	1
NV7086	Nylon Handled Balloon Whisk 35cm	1
NV7087	Nylon Handled Balloon Whisk 40cm	1
NV7088	Nylon Handled Balloon Whisk 50cm	1



Polypropylene Handled Serving Utensils

Polished stainless steel with heat resistant dishwasher proof one piece moulded handles.

Code	Description	Pack	Code	Description	Pack
GR3831	Serving Spoon Plain Black 22cm	1	GR3828	Serving Spoon Plain Black 34cm	1
GR3832	Serving Spoon Perforated Black 22cm	1	GR3829	Serving Spoon Perforated Black 34cm	1



Code	Description	Pack	Code	Description	Pack
GR3838	Salad Fork Black 22cm	1	GR3837	Salad Spoon Black 22cm	1



Code	Description	Pack	Code	Description	Pack
GR3823	Slotted Slice Black 35cm	1	GR3827	Pastry Server Black 16.5cm	1



Code	Description	Pack	Code	Description	Pack
GR3836	Sauce Ladle Black 40ml	1	GR3824	Soup Ladle Black 192ml	1



Code	Description	Pack	Code	Description	Pack
GR3822	Serving Tongs Black 23.5 m	1	GR3826	Chip Scoop Black 28cm	1
GR3822B	Serving Tongs Blue 23.5cm	1			
GR3822G	Serving Tongs Green 23.5cm	1			
GR3822R	Serving Tongs Red 23.5cm	1			
GR3822W	Serving Tongs White 23.5cm	1			
GR3822Y	Serving Tongs Yellow 23.5cm	1			



Polypropylene Handled Serving Utensils continued

Soft Grip Utensils

Code	Description	Pack
FA3510	Soft Grip Tin Opener	1
FA3550	Soft Grip Balloon Whisk	1
FA3514	Soft Grip Garlic Press	1
FA3562	Soft Grip Perforated Spoon	1
FA3518	Soft Grip Apple Corer	1
FA3554	Soft Grip Fish/Egg Slice	1
FA3522	Soft Grip Swivel Peeler	1
FA3558	Soft Grip Plain Spoon	1
FA3526	Soft Grip Pizza Cutter	1
FA3524	Soft Grip Fixed Peeler	1



Black Nylon Utensils

Heat resistant to 210°C. Dishwasher safe.
Ideal for use with non-stick pans.

Code	Description	Pack
SJ3751	Plain Spoon 32cm	1
SJ3752	Perforated Spoon 32cm	1
SJ3750	Fish/Egg Slice 31cm	1
SJ3753	Soup Ladle 30cm	1
SJ3755	Potato Masher 24cm	1
SJ3756	Skimmer 32cm	1
SJ3757	Whisk 27cm	1
SJ3758	Spaghetti Server 30cm	1



Stainless Steel Preparation

Code	Description	Pack	Code	Description	Pack
NV3599	Colander 23cm	1	ZD7301	Rice Colander 33cm	1
MJ7305	Colander 30cm	1	ZD7303	Rice Colander 41cm	1
MJ7308	Colander 38cm	1			



Stainless Steel Preparation continued

Code	Description	Pack
MJ3561	Rectangular 4 Way Grater 23cm	1



Code	Description	Pack
NV3595	Measuring Jug 0.5 Ltr	1
NV3594	Measuring Jug 1.1 Ltr	1
NV3593	Measuring Jug 2.0 Ltr	1



Code	Description	Pack
MJ7121	Rimmed Bowl 1 Ltr 20cm	1
MJ7123	Rimmed Bowl 3 Ltr 24cm	1
MJ7125	Rimmed Bowl 5 Ltr 26cm	1
NV6095	Rimmed Bowl 8 Ltr 30cm	1
NV6095A	Rimmed Bowl 11 Ltr 35cm	1
NV6095B	Rimmed Bowl 14 Ltr 36cm	1



Code	Description	Pack
ZD6101	Mirror/Satin Mixing Bowl 2.4 Ltr 21.5cm	1
ZD6105	Mirror/Satin Mixing Bowl 6.4 Ltr 31cm	1



Code	Description	Pack
NV3596	Conical Strainer 13 cm	1
NV3597	Conical Strainer 18 cm	1
NV3598	Conical Strainer 23 cm	1



Code	Description	Pack
ZD3564	Chinois 22 cm	1



Stainless Steel Preparation continued

Code	Description	Pack
NV3711	Round Wire Mesh Strainer 23 cm	1
NV3712	Round Wire Mesh Strainer 33 cm	1



Code	Description	Pack
NV3701	Heavy Duty Bowl Strainer 20 cm	1
NV3703	Heavy Duty Bowl Strainer 26 cm	1



Code	Description	Pack
MJ7088	Flour Dredger	1
MJ7089	Sugar Dredger	1



Code	Description	Pack
MJ3585	Pizza Cutter 10cm	1



Wireware

Code	Description	Pack
CR3861	Square Fat Skimmer 20cm 30 Mesh	1



Code	Description	Pack
CR3862	Round Fat Skimmer 20cm 30 Mesh	1



Code	Description	Pack
WX3552	Cake Cooling Rack 43 x 26cm	1
CR3856	Cake Cooling Rack 64 x 36cm	1



Code	Description	Pack
WX3860	Heavy Duty Potato Masher Round Head 14cm	1



Wireware continued

Code	Description	Pack	Code	Description	Pack
CR3864	Medium Duty Skimmer/Spider 15cm	1	CR3873	Chip Shovel 20 x 20cm	1
CR3865	Medium Duty Skimmer/Spider 18cm	1			
CR3866	Medium Duty Skimmer/Spider 20cm	1			



Code	Description	Pack
WX3852	Heavy Duty Whisk 30cm	1
WX3853	Heavy Duty Whisk 36cm	1
WX3854	Heavy Duty Whisk 41cm	1
WX3855	Heavy Duty Whisk 46cm	1



General Kitchen Tools

Code	Description	Pack	Code	Description	Pack
WF7057	Measuring Jug 0.6 Ltr	1	WF7035	Mixing Bowl 15cm	1
WF7059	Measuring Jug 1.1 Ltr	1	WF7036	Mixing Bowl 20cm	1
WF7033	Mixing/Measuring Jug 2 Ltr	1	WF7036A	Mixing Bowl 25cm	1
			WF7037	Mixing Bowl 30cm	1



Code	Description	Pack
ST7032	Microwave Proof Measuring Jug 0.5 Ltr	1
ST7037	Microwave Proof Measuring Jug 1.1 Ltr	1
ST7033	Microwave Proof Measuring Jug 2 Ltr	1
ST7038	Microwave Proof Tall Measuring Jug 2.2 Ltr	1



General Kitchen Tools continued

Code	Description	Pack	Code	Description	Pack
CG2023	Pyrex Glass Mixing/Measuring Jug 0.5 Ltr	1	CG2031	Pyrex Glass Mixing Bowl 0.5 Ltr	1
CG2023A	Pyrex Glass Mixing/Measuring Jug 1.0 Ltr	1	CG2033	Pyrex Glass Mixing Bowl 1.0 Ltr	1
			CG2024	Pyrex Glass Mixing Bowl 2.0 Ltr	1
			CG2025	Pyrex Glass Mixing Bowl 3.0 Ltr	1



Code	Description	Pack	Code	Description	Pack
CG2034	Pyrex Round Casserole 1.0 Ltr	1	MS9030	Kitchen Clock 24 cm	1
CG2035	Pyrex Round Casserole 1.6 Ltr	1			
CG2037	Pyrex Round Casserole 2.3 Ltr	1			



Code	Description	Pack
WF7082B	Plastic Colander Cream 23cm	1
WF7082G	Plastic Colander Silver 23cm	1



Code	Description	Pack
TA3580	Strainer Nylon Mesh 16cm	1
ZD3583	Strainer Nylon Mesh 22cm	1



Code	Description	Pack
WF7026	Funnel 7.5cm	1
WF7028	Funnel 14cm	1
WF7029	Funnel 18cm	1



Code	Description	Pack
FJ3600	Melamine Spoon 30cm	1
FJ3601	Melamine Spoon 38cm	1
FJ3602	Melamine Spoon 45cm	1



General Kitchen Tools continued

Code	Description	Pack
RL3709	Wooden Spoon 25cm	1
RL3710	Wooden Spoon 30cm	1
RL3711	Wooden Spoon 35cm	1
RL3712	Wooden Spoon 41cm	1
RL3713	Wooden Spoon 46cm	1



Code	Description	Pack
RL3706	Wooden Rolling Pin 41cm	1



Code	Description	Pack
RU3753	Hi Heat Scraper 25cm	1
RU3754	Hi Heat Scraper 35cm	1

Resist heat up to 250°C.
Cool touch handle.



Code	Description	Pack
MB7038	Plastic Plate Scraper 20cm	1
MB7062	Plastic Spatula 20cm	1



Code	Description	Pack
GB7101	Rectangular Bowl Scraper	1



Code	Description	Pack
CB7086	Dredger Flour/Sugar Set Polycarbonate	1



Code	Description	Pack
RU3749	Flat Scraper 24cm	1
RU3751	Flat Scraper 34cm	1



Code	Description	Pack
RU3757	Hi Heat Spoonula 25cm	1
RU3759	Hi Heat Spoonula 35cm	1



Code	Description	Pack
AM3811	Griddle Scraper 13cm	1



Code	Description	Pack
NV3579	Dough Scraper	1



General Kitchen Tools continued

Code	Description	Pack
ZD3574	Lancashire Peeler	1



Code	Description	Pack
ZD3567	Melon Baller	1



Code	Description	Pack
MT3844	Canelle Cutter Right Cut	1

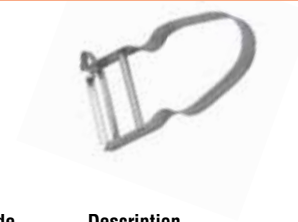


Code	Description	Pack
GB7070	Egg Wedger	1



Code	Description	Pack
SJ3554	Plastic Egg Slicer	1

Code	Description	Pack
ZD3576	All Metal Speed Peeler	1



Code	Description	Pack
MT3842	Zester	1



Code	Description	Pack
MT3846	Paris Scoop Double 22mm & 25mm	1



Code	Description	Pack
TA3576	Garlic Press	1



General Kitchen Tools continued

Code	Description	Pack
GB7080	Heavy Duty Duplex Egg Slicer	1



Code	Description	Pack
ST7031	Plastic Juice Extractor	1



Code	Description	Pack
MT3620	Pasta Maker	1



Code	Description	Pack
WL3567	Mouli Grater with 3 Blades	1
Slice, grate and shred food easily with this multi-purpose plastic grater.		



Code	Description	Pack
NV3581	Stainless Steel Skewers 20cm	6



Code	Description	Pack
NV3591	Twin Lever Corkscrew/Bottle Opener	1
NV3592	Waiter's Friend	1



Code	Description	Pack
PH2531	Gas Lighter Piezo Action	1



General Kitchen Tools continued

Code	Description	Pack
AB8136	3 Tread Step Ladder (Trade EN131)	1
AB8137	4 Tread Step Ladder (Trade EN131)	1
AB8138	5 Tread Step Ladder (Trade EN131)	1



Flexible soft silicone glove giving maximum dexterity. Silicone fully waterproof and easy cleaned under the tap. Textured surface gives safe, comfortable grip. Silicone thermal contact tested in accordance to EN 407:2004 Level 3 350°C Hygienic, durable and machine washable at 40°C Comfortable cotton liner. Fabric cuff for comfort.

Code	Description	Pack
MP3659	Oven Glove Silicone Black 38 cm (Pair)	1



Code	Description	Pack
RU3745	2 Step Folding Step Stool	1
RU3821	Heavy Duty Step Stool	1
Glides on retractable rubber castors		
Supports loads up to 158.8 kg		



Code	Description	Pack
BC8039	Oven Glove - Plain	1



Code	Description	Pack
BC8050	Oven Cloth 90 x 35cm	1



Bonzer Can Openers

For almost 30 years, the Bonzer has been the dependable workhorse of the kitchen.

With its strong and heavy construction, the Classic combines incredible reliability and durability with the superb design that makes all Bonzer can openers a pleasure to use.

The blades on every Bonzer contain an anti bacterial component that prevents bacterial growth.

Every Bonzer Black model has the patented quick-release blade carrier that is easily removed for efficient cleaning.

All models have dishwasher safe cutting mechanisms. All models come complete with screwfix base and clamp.

Code	Description	Pack	Code	Description	Pack
MP3656	Bonzer Classic 40cm	1	MP3657	Bonzer Black EZ- 20 40cm	1
MP3663	Bonzer Classic 62cm	1	MP3666	Bonzer Black EZ- 20 62cm	1



If you open a few regular sized cans a day then an EZ-20 will suit your needs. Ideal for guest houses, small restaurants, pubs & tea rooms.



Code	Description	Pack
MP3658	Bonzer Black EZ- 40 62cm	1

Kitchens opening up to 40 cans a day would benefit from a more robust model. The EZ-40 is ideal for hotels, cafes, restaurants, pubs and takeaways.

Code	Description	Pack	Code	Description	Pack
MP3659	Spare Can Opener Blade	1	MP3660	Spare Can Opener Wheel - Standard	1



General Can Openers

Code	Description	Pack	Code	Description	Pack
PB3588	Butterfly Tin Opener	1	WL3590	Magican Tin Opener	1



Pastry & Cake Making Accessories

Code	Description	Pack
CW3501	Nylon Piping Bag 25cm	1
CW3502	Nylon Piping Bag 30cm	1
CW3502A	Nylon Piping Bag 35cm	1
CW3503	Nylon Piping Bag 41cm	1
CW3505	Nylon Piping Bag 46cm	1
CW3506	Nylon Piping Bag 60cm	1
CW3489	Poly Piping Tube Plain (No. 0) 4mm	1
CW3490	Poly Piping Tube Plain (No. 8) 13mm	1
CW3491	Poly Piping Tube Plain (No. 12) 17mm	1
CW3494	Poly Piping Tube 7 Star (No. 4) 8mm	1
CW3495	Poly Piping Tube 7 Star (No. 8) 13mm	1
CW3496	Poly Piping Tube 8 Star (No. 12) 21mm	1



Code	Description	Pack
CW3500	Piping Bag Disposable Blue 52cm Pk 100	1

Code	Description	Pack
RW3706	Rolling Pin 15cm	1
RW3714	Rolling Pin 36cm	1
RW3727	Rolling Pin 41cm	1
RW3728	Rolling Pin 51cm	1



Code	Description	Pack	Code	Description	Pack
MY3601	Pastry Brush Flat Bristle 2.5cm	1	MY3606	Pastry Brush Blue Flat Bristles 2.5cm	1
MY3604	Pastry Brush Flat Bristle 5cm	1	MY3605	Pastry Brush Blue Flat Bristles 5cm	1
MY3569	Pastry Brush Round Bristle 1cm	1			
MY3603	Pastry Brush Round Bristle 2.5cm	1			



Pastry & Cake Making Accessories continued

Code	Description	Pack
MP3618	Lattice Cutter Plastic 21 x 13cm	1



Code	Description	Pack
PB1072	Pastry Cutters Plain	3



Code	Description	Pack
PB1071	Pastry Cutters Fluted	3



Code	Description	Pack
MT3575	Pastry Cutters Plain	11



Code	Description	Pack
MT3577	Pastry Cutters Fluted	11



Code	Description	Pack
GB7050	Angel Cutter 11cm	1
GB7051	Christmas Tree Cutter 12.5cm	1



Code	Description	Pack
GB7054	Bunny Cutter 12cm	1



Code	Description	Pack
GB7053	Heart Shape Cutter 11cm	1



Pastry & Cake Making Accessories continued

Code	Description	Pack
TA3559	Gingerbread Man Cutter	1



Code	Description	Pack
TA3601	Animal Cutters	4



Code	Description	Pack
TA3603	Cockolly Cutters	9



Code	Description	Pack
TA3602	Number Cutters	9



Code	Description	Pack
GB7059	Ice Cream Cone Cutter	1



Code	Description	Pack
ED0012	Transport Cutter Set 7 Piece Supplied in metal tin	1



Code	Description	Pack
ED0009	Xmas Cutter Set Supplied in a Plastic Tub	12



Code	Description	Pack
TP3564	Plastic Cutters Set Alpha Numeric	36



Pastry & Cake Making Accessories continued

Code	Description	Pack
GC7053	Plastic Pudding Basin 0.15 Ltr	1
GC7055	Plastic Pudding Basin 0.3 Lt	1
GC7057	Plastic Pudding Basin 0.6 Ltr	1
GC7059	Plastic Pudding Basin 1.2 Ltr	1
GC7060	Plastic Pudding Basin 2 Ltr	1
GC7062	Plastic Pudding Basin 2.3 Ltr	1



Code	Description	Pack
NV7551	Quick Fit Blow Torch Head	1

Powerful, simple to use, quick fit torch head.
Auto ignition. Requires Butane Gas Canister
(Supplied separately)



Code	Description	Pack
WL3563	1 Hour Kitchen Timer	1



Code	Description	Pack
PB3565	Plastic Measures	6



Code	Description	Pack
NV7553	Butane Canister 220g 8oz	4



Kitchen Knives - Victorinox

Professional high quality knives with anti-slip handles

Code	Description	Pack
MP4201	Serrated Bread Knife 21cm	1



Code	Description	Pack
MP4203	Cooks Knife 15cm	1
MP4205	Cooks Knife 19cm	1
MP4207	Cooks Knife 22cm	1
MP4209	Cooks Knife 25cm	1



Code	Description	Pack
MP4215	Boning Knife flexible 15cm	1



Code	Description	Pack
MP4221	Filleting Knife flexible 16cm	1



Code	Description	Pack
MP4225	Utility Knife 11cm	1



Code	Description	Pack
MP4227	Paring Knife 10cm	1



Code	Description	Pack
MP4231	Butchers Steel 30 cm	1



Solingen - Standard

Code	Description	Pack
MN4025	Paring Knife Black 8cm	1
MN4025G	Paring Knife Green 8cm	1



Code	Description	Pack
MN4023	Cooks Knife Black 14cm	1
MN4024	Cooks Knife Black 18cm	1



Code	Description	Pack
MN4022	Carving Knife Black 20cm	1



Code	Description	Pack
MN4026	Serrated Utility Knife 11cm	1



Code	Description	Pack
MN4021	Bread Knife Black 18cm	1



Colour Coded Knives

Code	Description	Pack
MN4033B	Cooks Knife Blue 16cm	1
MN4033BR	Cooks Knife Brown 16cm	1
MN4033G	Cooks Knife Green 16cm	1
MN4033R	Cooks Knife Red 16cm	1
MN4033W	Cooks Knife White 16cm	1
MN4033Y	Cooks Knife Yellow 16cm	1
MN4033	Cooks Knife Black 16cm	1



MN4034B	Cooks Knife Blue 20cm	1
MN4034BR	Cooks Knife Brown 20cm	1
MN4034G	Cooks Knife Green 20cm	1
MN4034R	Cooks Knife Red 20cm	1
MN4034W	Cooks Knife White 20cm	1
MN4034Y	Cooks Knife Yellow 20cm	1
MN4034	Cooks Knife Black 20cm	1



MN4037B	Cooks Knife Blue 25cm	1
MN4037BR	Cooks Knife Brown 25cm	1
MN4037G	Cooks Knife Green 25cm	1
MN4037R	Cooks Knife Red 25cm	1
MN4037W	Cooks Knife White 25cm	1
MN4037Y	Cooks Knife Yellow 25cm	1
MN4037	Cooks Knife Black 25cm	1



Colour Coded Knives continued

Code	Description	Pack
GK3058	Serrated Kitchen Knife Black 13cm	1
GK3058BR	Serrated Kitchen Knife Brown 13cm	1
GK3058G	Serrated Kitchen Knife Green 13cm	1
GK3058R	Serrated Kitchen Knife Red 13cm	1
GK3058W	Serrated Kitchen Knife White 13cm	1



Code	Description	Pack
GK3070	Pointed Paring Knife Black 9cm	1
MN4035BR	Pointed Paring Knife Brown 9cm	1
MN4035G	Pointed Paring Knife Green 9cm	1



Code	Description	Pack
GK3052	Wavy Edge Slicer Black 25 cm	1
GK3052W	Wavy Edge Slicer White 25 cm	1
GK3052Y	Wavy Edge Slicer Yellow 25 cm	1



Code	Description	Pack
MN4035	Paring Knife Black 9cm	1
MN4035BR	Paring Knife Brown 9cm	1
MN4035G	Paring Knife Green 9cm	1
MN4035R	Paring Knife Red 9cm	1
MN4035W	Paring Knife White 9cm	1



Code	Description	Pack
GK3087B	Boning Knife Blue 15cm	1



Code	Description	Pack
GK3051	Scalloped Slicer Black 25 cm	1
GK3051W	Scalloped Slicer White 25 cm	1



Knife Sets

Code	Description	Pack
ZD4010	Knife Set With Wooden Block 6 Piece	1

Includes 1 Cooks Knife,
1 Boning Knife,
1 Utility Knife,
1 Paring Knife,
1 Carving Knife,
1 Pair of Scissors



Code	Description	Pack
ZD4015	Knife Set With Stainless Steel Block 5 Piece	1

Includes 1 Cooks Knife,
1 Boning Knife,
1 Utility Knife,
1 Paring Knife,
1 Carving Knife.



Code	Description	Pack
NV6065	Knife Set With Canvas Wallet 7 Piece	1

Includes 1 Paring Knife, 1 Cooks Knife,
1 Boning Knife, 1 Filleting Knife, 1 Palette Knife,
1 Steel, 1 Peeler



Knife Accessories

Code	Description	Pack
GK3044	Palette Knife Black 15cm	1
GK3045	Palette Knife Black 18cm	1
GK3046	Palette Knife Black 20cm	1
MN4048	Palette Knife White 20cm	1



Code	Description	Pack
MN4070	General Purpose Kitchen Scissors	1



Code	Description	Pack
HF3561	Chantry Knife Sharpener	1



Code	Description	Pack
SJ3551	Hand Held Knife Sharpener	1



Code	Description	Pack
ZD4060	Magnetic Knife Rack 30cm	1
MT3033	Magnetic Knife Rack 55cm	1



Code	Description	Pack
GK3048	Cooks Fork Black 15cm	1



Code	Description	Pack
SJ3553	Anysharp Knife Sharpener	1

An amazing sharpener with exceptional results!
Can even sharpen serrated edges. Sharpens any
knife with diamond precision. Perfect for hardened, pro-
fessional knives. Great for serrated edges such as bread
or carving knives. Totally safe to use - hands are always
away from the blade. Comes with a PowerGrip suction
cup for extra safety when in use, which easily attaches
without the need for extra tools. High quality plastic.
Small, compact - ideal for safe and easy storage.



Code	Description	Pack
GK4050	Steel Fine Cut 25cm	1



Code	Description	Pack
MT3032	Canvas Knife Wallet 10 Compartment	1

(Knives shown are not included)



De Luxe Cheese Board

Cuts cheese quickly, neatly, economically. No crumbling, no waste. Hygienic and safe to use. Patent floating wire slices smoothly through all types of cheese. Makes accurate cutting easy. After each cut, wire returns to cutting position. When not in use, handle is housed in retaining slots. Wire is kept semi-taut and free from kinks. Replacement wire fitted in seconds.



Code	Description	Pack
DG3741	De Luxe Cheese Board	1
DG3745	Spare Cheese Wire 60cm	12
DG3746	Cheese Wire With Handles 90cm	2

Coloured Chopping Boards

Standard Quality

Code	Description	Pack
ZD3722B	46 x 30cm Blue	1
ZD3722BR	46 x 30cm Brown	1
ZD3722G	46 x 30cm Green	1
ZD3722R	46 x 30cm Red	1
ZD3722W	46 x 30cm White	1
ZD3722Y	46 x 30cm Yellow	1



Economy Chopping Boards

Code	Description	Pack
NV3760B	35 x 25cm Blue	1
NV3760BR	35 x 25cm Brown	1
NV3760G	35 x 25cm Green	1
NV3760R	35 x 25cm Red	1
NV3760W	35 x 25cm White	1
NV3760Y	35 x 25cm Yellow	1



Catering Quality - High Density

Code	Description	Pack
RW3718B	30 x 23cm Blue	1
RW3718BR	30 x 23cm Brown	1
RW3718G	30 x 23cm Green	1
RW3718R	30 x 23cm Red	1
RW3718W	30 x 23cm White	1
RW3718Y	30 x 23cm Yellow	1
RW3719B	46 x 30cm Blue	1
RW3719BR	46 x 30cm Brown	1
RW3719G	46 x 30cm Green	1
RW3719R	46 x 30cm Red	1
RW3719W	46 x 30cm White	1
RW3719Y	46 x 30cm Yellow	1
RW3720B	61 x 46cm Blue	1
RW3720BR	61 x 46cm Brown	1
RW3720G	61 x 46cm Green	1
RW3720R	61 x 46cm Red	1
RW3720W	61 x 46cm White	1
RW3720Y	61 x 46cm Yellow	1

Code	Description	Pack
RW3734	Stainless Steel 6 Slot Chopping Board Stand	1

Code	Description	Pack
RW3724	Colour Coding Wall Chart	1



Kitchen Scales

Code	Description	Pack
PE3527	Salter Compact Diet Scale 500g	1

Weighs in 5g increments.
Easy to read clock-style dial.
Scale fits inside pan for neat, dust-free storage.



Code	Description	Pack
PE3543	Salter Kitchen Scale 5 Kg	1

Easy to read clock-style dial.
Weighs in 25g increments.
Scale fits inside pan for neat, dust-free storage.



Code	Description	Pack
PE3529	Salter Electronic Disc Scale 5 Kg	1
PE3529B	Salter Electronic Disc Scale Blue 5 Kg	1
PE3529G	Salter Electronic Disc Scale Green 5 Kg	1
PE3529R	Salter Electronic Disc Scale Red 5 Kg	1

Add & Weigh function.
Stainless steel weighing platform.
Weigh ingredients directly onto the scale or use your own bowl. Easy to read LCD display.



Code	Description	Pack
PE3544	Salter Diet Scale 1000g	1

Easy read dial
Weighs in 25g increments



Code	Description	Pack
PE3533	Salter Add & Weigh Scale 4 Kg	1

Add & Weigh 'zero' function allows for measurement of multiple ingredients in the same bowl. Rotating twin dial. Bowl is dishwasher, freezer and microwave safe. Bowl inverts over scale for neat storage.



Code	Description	Pack
PE3551B	Salter Scale - Blue 3 Kg	1
PE3551G	Salter Scale - Green 3 Kg	1
PE3551PK	Salter Scale - Pink 3 Kg	1
PE3551PL	Salter Scale - Purple 3 Kg	1
PE3551R	Salter Scale - Red 3 Kg	1

Easy to read dial. Dishwasher safe bowl.
Compact for easy storage.
Metric and imperial measures.
Weighs in 25g increments.



Kitchen Scales continued

Code	Description	Pack
PE3530	Salter Aquatronic/Standard Scale 5 Kg	1

Liquid measurement feature. Weigh directly onto platform or with a bowl. Add and weigh feature.



Code	Description	Pack
PE3537	Salter Elite Plus Scale 5 Kg	1

Aquatronic function for measuring liquids in ml or fl.oz. 2.5 Ltr microwave and dishwasher safe shatterproof bowl. Features handle, pouring spout and non slip base ring. Easy to read LCD display.



Code	Description	Pack
MT3840	Light Duty Catering Scale 10kg x 20g	1
MT3542	Light Duty Catering Scale 20kg x 20g	1

Stainless steel bowl as standard. High quality stainless steel construction.



Code	Description	Pack
PE3541	Heavy Duty Catering Scale 10kg x 50g	1

All steel construction. Supplied with a stainless steel plate 22 x 22 cm. 20kg version also available, please ask for details.



Code	Description	Pack
PE3540	Heavy Duty Catering Scale 15kg x 50g	1

A robust mechanism housed in a heavy duty high-impact ABS case. Supplied with a double lipped stainless steel goods pan/scoop.



Kitchen Scales continued

Code	Description	Pack
PE3542	Catering Scales 15kg x 5g	1

Heavy duty construction. Digital dual readout back and front. Weighing Pan Dimensions 235mm x 178mm 5 digits LCD Display. Power Supply: AC220v/DC6v adaptor and two 1.5v batteries.



Code	Description	Pack
PE3534	Light Duty Balance Scale	1

Fitted with a stainless steel pan 28 x 18 cm. Weights not included.



Code	Description	Pack
PE3545	Heavy Duty Catering Scale	1

Fitted with a stainless steel pan 40 x 28 cm. Weights not included.



Code	Description	Pack
PE3535	Imperial Weights to 4 lb	1
PE3536	Metric Weights to 2 Kg	1

Code	Description	Pack
PE3547	Imperial Weights to 28 lb	1
PE3548	Metric Weights to 6 Kg	1
PE3546	Metric Weights to 11 Kg	1

Aluminium Bakeware

Manufactured from high quality aluminium with a satin finish. Aluminium is an excellent heat conductor which prevents hot spots. Totally seamless and hygienic.

Baking Sheets

Code	Description	Pack
GR1080	32 x 22 x 2cm	1
GR1081	37 x 27 x 2cm	1
GR1082	42 x 31 x 2cm	1
GR1083	47 x 36 x 2cm	1
GR1084	52 x 42 x 2cm	1
GR1078	1/1 G/N Size 53 x 32.5 x 2.5 cm	1
GR1079	Extra Large 65 x 45 x 2.5 cm	1



Bakewell Pans

Code	Description	Pack
GR1085	32 x 22 x 4cm	1
GR1086	37 x 27 x 4cm	1
GR1087	42 x 31 x 4cm	1
GR1088	47 x 36 x 4cm	1
GR1089	52 x 42 x 4cm	1



Baking Dishes

Code	Description	Pack
GR1100	32 x 22 x 5cm	1
GR1101	37 x 27 x 7cm	1
GR1102	42 x 31 x 7cm	1
GR1103	47 x 36 x 7cm	1
GR1104	52 x 42 x 7cm	1



Baking Dishes With Integral Handles

Code	Description	Pack
GR1122	41 x 30 x 7cm	1
GR1123	46 x 36 x 7cm	1
GR1124	51 x 41 x 7cm	1
GR1126	61 x 46 x 7cm	1



Deep Roasting Dishes with Integral Handles

Code	Description	Pack
GR1127	41 x 30 x 10cm	1
GR1128	46 x 36 x 10cm	1
GR1129	51 x 41 x 10cm	1
GR1130	61 x 46 x 10cm	1



Extra Deep Roasting Dishes with Integral Handles

Code	Description	Pack
GR1131	46 x 36 x 15cm	1
GR1132	51 x 41 x 15cm	1



Aluminium Baking and Steaming Tins & Lids

Code	Description	Pack	Code	Description	Pack	Code	Description	Pack
BH1153	Depth 32mm	1	BH1156	Depth 32mm	1	BH1158	Depth 32mm	1
BH1152	Depth 45mm	1	BH1155	Depth 45mm	1	BH1157	Depth 83mm	1
BH1159	Depth 57mm	1	BH1160	Depth 57mm	1			
BH1151	Depth 83mm	1	BH1154	Depth 83mm	1			



Full Size - 409 x 267mm

Half Size - 267 x 206mm

Third Size - 273 x 149mm

Stainless Steel Roasting Dishes

Code	Description	Pack
ZD1720	25 x 18cm	1
ZD1722	30 x 22cm	1
ZD1724	35 x 26cm	1
ZD1726	40 x 30cm	1



Non Stick Bakeware

Dishwasher safe.

Code	Description	Pack
HW1081	Baking Sheet 380 x 265 x 12mm	1



Code	Description	Pack
HW1082	Swiss Roll Tin 330 x 230 x 20mm	1



Code	Description	Pack
HW1086	12 Cup Bun Tin	1



Code	Description	Pack
HW1087	Baking Sheet 325 x 305 x 21mm	1



Non Stick Bakeware continued

Code	Description	Pack	Code	Description	Pack
------	-------------	------	------	-------------	------

HW1088	Round Sandwich Tin 200 x 22mm	1	HW1090	12 Cup Muffin Tin	1
--------	-------------------------------	---	--------	-------------------	---



Code	Description	Pack	Code	Description	Pack
------	-------------	------	------	-------------	------

HW1091	Loaf Pan 0.5kg (1lb)	1	HW1092	Loaf Pan 1kg (2lb)	1
--------	----------------------	---	--------	--------------------	---



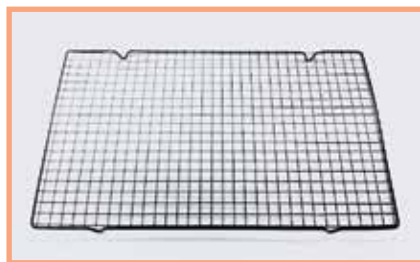
Code	Description	Pack	Code	Description	Pack
------	-------------	------	------	-------------	------

HW1093	Pizza Pan Perforated 330 x 3mm	1	HW1095	Square Cake Tin 210 x 210 x 35mm	1
--------	--------------------------------	---	--------	----------------------------------	---



Code	Description	Pack
------	-------------	------

HW3552	Cooling Rack 410 x 250mm	1
--------	--------------------------	---



Non Stick Cake Tins

Dishwasher safe. UK manufactured.

Code	Description	Pack	Code	Description	Pack
------	-------------	------	------	-------------	------

PB1084	Cake Pan Loose Base Non-Stick 20 x 9cm	1	PB1085	Cake Tin Springform Non-Stick 19cm	1
PB1094	Cake Pan Loose Base Non-Stick 20 x 4.5cm	1	PB1092	Cake Tin Springform Non-Stick 26cm	1



Non Stick Fluted Tins

Dishwasher safe. UK manufactured

Code	Description	Pack
------	-------------	------

MP4013	Cake Tin 100 x 30mm	1
--------	---------------------	---



Code	Description	Pack
------	-------------	------

MP4023	Loose Base Flan Tin 200 x 30mm	1
MP4025	Loose Base Flan Tin 240 x 30mm	1

Code	Description	Pack
------	-------------	------

MP4027	Fluted Tart Tin 240 x 30mm	1
--------	----------------------------	---



Ground Base Cookware

Suitable for all heating surfaces except induction. Manufactured from 6mm to 8mm thick Aluminium. Satin finished with a scrolled base. Reinforced thick rims for maximum strength and durability. Heavy duty steel side handles & lid handle, Rivetted for optimum strength. Not dishwasher safe.

Ground Base Boiling Pots & Lids

Code	Description	Pack
PC1608	20cm Dia 4.0 Ltr	1
PC1609	22cm Dia 5.5 Ltr	1
PC1610	24cm Dia 7.0 Ltr	1
PC1611	28cm Dia 11.7 Ltr	1
PC1612	30cm Dia 14.0 Ltr	1
PC1613	32cm Dia 17.0 Ltr	1
PC1614	36cm Dia 24.5 Ltr	1
PC1615	40cm Dia 34.0 Ltr	1
PC1616	45cm Dia 49.0 Ltr	1



Ground Base Saucepans & Lids

Code	Description	Pack
BH1703	12cm Dia 1.1 Ltr	1
BH1704	16cm Dia 2.2 Ltr	1
BH1705	18cm Dia 2.8 Ltr	1
BH1706	20cm Dia 4 Ltr	1
BH1707	22cm Dia 5.7 Ltr	1
BH1708	24cm Dia 7.2 Ltr	1
BH1701	Milkpan 15cm 1.1 Ltr (No Lid)	1



Ground Base Double Boilers & Lids

Code	Description	Pack
PC1653	C/W Spout 6.8 Ltr	1
PC1654	C/W Spout 9.1 Ltr	1
PC1655	C/W Spout 13.6 Ltr	1

Medium Duty Cookware

Manufactured using 2.5mm to 4mm thick Aluminium. Satin finished. Rivetted steel side & lid handles for maximum strength. Not suitable for induction or electric hobs. Aluminium is not dishwasher safe.

Medium Duty Boiling Pots & Lids

Code	Description	Pack
PC1600	22cm Dia 5.5 Ltr	1
PC1601	24cm Dia 7.0 Ltr	1
PC1602	28cm Dia 11.5 Ltr	1
PC1603	30cm Dia 14.0 Ltr	1
PC1604	32cm Dia 17.0 Ltr	1
PC1605	36cm Dia 24.4 Ltr	1



Medium Duty Saucepan's & Lids

Code	Description	Pack
YM1523	16cm Dia 2 Ltr	1
YM1524	18cm Dia 3 Ltr	1
YM1525	20cm Dia 4 Ltr	1
YM1526	22cm Dia 5.5 Ltr	1
YM1527	24cm Dia 7 Ltr	1
YM1520	Milkpan 1.1 Ltr (No Lid)	1



Medium Duty Gas Kettles

Code	Description	Pack
SJ1541	2.3 Ltr	1
SJ1543	4.5 Ltr	1



Heavy Duty Non Stick Frypans

High quality thick aluminium for excellent heat distribution. Teflon Platinum Plus Coating for professional non-stick performance. Durable flat handles with sturdy rivets.

Code	Description	Pack
ZD8021	Frypan Non Stick 20cm	1
ZD8021A	Frypan Non Stick 24cm	1
ZD8022	Frypan Non Stick 28cm	1
ZD8024	Frypan Non Stick 32cm	1
ZD8026	Frypan Non Stick 36cm	1
SJ1551	Omelette Pan Non Stick 20cm	1



Medium Duty Egg Poacher

Code	Description	Pack
PC1631	12 Cup Egg Poacher	1



Medium Duty Double Boilers & Lids

Code	Description	Pack
PC1647	C/W Spout 6.8 Ltr	1
PC1648	C/W Spout 9 Ltr	1
PC1649	C/W Spout 13.6 Ltr	1



Non Stick Saucepan Set

Easy clean non stick coating.

Code	Description	Pack
PD1500	3 Piece Set 16/18/20cm	1



Non-Stick Induction Frypans

Code	Description	Pack
NV8025	Frypan 20cm	1
NV8029	Frypan 26cm	1



Medium Duty Non Stick Range

Easy clean non-stick coating.

Code	Description	Pack
SJ1554	Milkpan 14cm	1
SJ1552	Frypan Non Stick 24cm	1
SJ1553	Frypan Non Stick 28cm	1
SJ1551	Omelette Pan 20cm	1
ZD1792	Wok Non -Stick 30 cm	1



Stainless Steel Cookware

High quality cookware at great value for money prices. Dishwasher safe.
All of our stainless steel cookware is suitable for induction cooking unless stated otherwise.

Stainless Steel Stockpots & Lids

Code	Description	Pack
NV8016	28 cm x 26cm 16 Ltr	1
NV8017	32 cm x 28cm 24 Ltr	1
NV8018	36 cm x 36cm 36 Ltr	1



Stainless Steel Boiling Pots & Lids

Code	Description	Pack
MJ8003	22cm 5 Ltr	1
MJ8004	24cm 7 Ltr	1
MJ8005	28cm 11 Ltr	1
MJ8008	32cm 15 Ltr	1
MJ8010	36cm 23 Ltr	1



Stainless Steel Saucepan's & Lids

Code	Description	Pack
MJ1567	16cm 1.5 Ltr	1
MJ1568	18cm 1.9 Ltr	1
MJ1569	20cm 2.4 Ltr	1
MJ1564	Milkpan 14cm	1



Stainless Steel Frypans

Code	Description	Pack
NV8000	Frypan 20cm	1
MJ1562	Frypan 24cm	1
NV8002	Frypan 28cm	1



Double Boilers

Code	Description	Pack
MP1593	Double Boiler 9 Ltr	1
MP1595	Double Boiler 15 Ltr	1

Stainless Steel Gastronorm Containers - Heavy Duty

18/10 Stainless Steel with strengthened corners to resist damage. A high quality range of containers available in all standard sizes. Ideal for presentation, transportation, storage and re-heating. Can be taken direct from freezer to cooker or bain marie.



Full Size 530 x 325mm

Code	Description	Pack
OZ3903	20mm Deep	1
OZ3906	40mm Deep	1
OZ3909	65mm Deep	1
OZ3912	100mm Deep	1
OZ3915	150mm Deep	1
OZ3918	200mm Deep	1

Full Size 530 x 325mm - Perforated

Code	Description	Pack
OZ3903P	20mm Deep	1
OZ3906P	40mm Deep	1
OZ3909P	65mm Deep	1
OZ3912P	100mm Deep	1
OZ3915P	150mm Deep	1

Two Thirds Size 354 x 325mm

Code	Description	Pack
OZ3922	40mm Deep	1
OZ3924	65mm Deep	1
OZ3926	100mm Deep	1
OZ3928	150mm Deep	1

Quarter Size 265 x 162mm

Code	Description	Pack
OZ3972	65mm Deep	1
OZ3974	100mm Deep	1
OZ3976	150mm Deep	1

Sixth Size 176 x 162 mm

Code	Description	Pack
OZ3982	65mm Deep	1
OZ3984	100mm Deep	1
OZ3986	150mm Deep	1

Half Size 325 x 265mm

Code	Description	Pack
OZ3932	20mm Deep	1
OZ3934	40mm Deep	1
OZ3938	65mm Deep	1
OZ3940	100mm Deep	1
OZ3942	150mm Deep	1
OZ3944	200mm Deep	1

Ninth Size 176 x 108mm

Code	Description	Pack
OZ3992	65mm Deep	1
OZ3994	100mm Deep	1

Half Size 325 x 265mm - Perforated

Code	Description	Pack
OZ3936P	40mm Deep	1
OZ3938P	65mm Deep	1
OZ3940P	100mm Deep	1
OZ3942P	150mm Deep	1

Standard Lids With Handle

Code	Description	Pack
OZ4402	Full Size	1
OZ4404	Two Thirds Size	1
OZ4406	Half Size	1
OZ4408	Third Size	1
OZ4410	Quarter Size	1
OZ4412	Sixth Size	1
OZ4416	Ninth Size	1

Third Size 325 x 176mm

Code	Description	Pack
OZ3952	20mm Deep	1
OZ3954	40mm Deep	1
OZ3956	65mm Deep	1
OZ3958	100mm Deep	1
OZ3960	150mm Deep	1
OZ3962	200mm Deep	1

Spill Proof Lids With Handle

Code	Description	Pack
OZ4402S	Full Size	1
OZ4406S	Half Size	1
OZ4408S	Third Size	1
OZ4410S	Quarter Size	1
OZ4412S	Sixth Size	1

Stainless Steel Gastronorm Containers - Standard plus Accessories

Ideal for food service counters. Suitable for cooking, storage, reheating, transportation, blast chilling and presentation.

Full Size 530 x 325 mm

Code	Description	Pack
GN8312	20 mm Deep	1
GN8314	40 mm Deep	1
GN8316	65 mm Deep	1
GN8318	100 mm Deep	1
GN8320	150 mm Deep	1
GN8322	200 mm Deep	1

Full Size 530 x 325 mm Perforated

Code	Description	Pack
GN8312P	20 mm Deep	1
GN8314P	40 mm Deep	1
GN8316P	65 mm Deep	1
GN8318P	100 mm Deep	1
GN8320P	150 mm Deep	1
GN8322P	200 mm Deep	1

Two Thirds Size 354 x 325 mm

Code	Description	Pack
GN8324	40 mm Deep	1
GN8326	65 mm Deep	1
GN8328	100 mm Deep	1
GN8330	150 mm Deep	1

Half Size 325 x 265 mm

Code	Description	Pack
GN8332	20 mm Deep	1
GN8334	40 mm Deep	1
GN8336	65 mm Deep	1
GN8338	100 mm Deep	1
GN8340	150 mm Deep	1
GN8342	200 mm Deep	1

Half Size 325 x 265 mm Perforated

Code	Description	Pack
GN8336P	65 mm Deep	1
GN8338P	100 mm Deep	1
GN8340P	150 mm Deep	1

Third Size 325 x 176 mm

Code	Description	Pack
GN8343	40 mm Deep	1
GN8344	65 mm Deep	1
GN8346	100 mm Deep	1
GN8348	150 mm Deep	1
GN8350	200 mm Deep	1

Quarter Size 265 x 162 mm

Code	Description	Pack
GN8352	65 mm Deep	1
GN8354	100 mm Deep	1
GN8356	150 mm Deep	1
GN8358	200 mm Deep	1

Sixth Size 176 x 162 mm

Code	Description	Pack
GN8360	65 mm Deep	1
GN8362	100 mm Deep	1
GN8364	150 mm Deep	1
GN8366	200 mm Deep	1

Ninth Size 176 x 108 mm

Code	Description	Pack
GN8368	65 mm Deep	1
GN8370	100 mm Deep	1
GN8372	150 mm Deep	1

Standard Lids With Handle

Code	Description	Pack
GN8380	Full Size	1
GN8381	Two Thirds Size	1
GN8382	Half Size	1
GN8383	Third Size	1
GN8384	Quarter Size	1
GN8385	Sixth Size	1
GN8386	Ninth Size	1

Spill Proof Lids With Handle

Code	Description	Pack
GN8380S	Full Size	1
GN8382S	Half Size	1
GN8383S	Third Size	1

Stainless Steel Gastronorms Accessories

Code	Description	Pack
GR3897	Divider Bar S/Steel 1/1 Size (520 Mm)	1
GR3898	Divider Bar S/Steel 1/2 Size (315 Mm)	1
FL3890	Blanking Plate S/Steel 1/1	1
GR3888	Drainer Plate Full Size	1
GR3889	Drainer Plate S/Steel 1/2 Size	1

Polycarbonate Gastronorm Containers

For cold food storage, transportation and display.
Dishwasher safe and non stick for easy cleaning.
Recommended for cold use only



Full Size 530 x 325mm

Code	Description	Pack
CB3380B	65mm Deep Black	1
CB3380C	65mm Deep Clear	1
CB3381B	100mm Deep Black	1
CB3381C	100mm Deep Clear	1
CB3382B	150mm Deep Black	1
CB3382C	150mm Deep Clear	1
CB3383B	200mm Deep Black	1
CB3383C	200mm Deep Clear	1

Half Size 325 x 265mm

Code	Description	Pack
CB3390B	65mm Deep Black	1
CB3390C	65mm Deep Clear	1
CB3391B	100mm Deep Black	1
CB3391C	100mm Deep Clear	1
CB3392B	150mm Deep Black	1
CB3392C	150mm Deep Clear	1
CB3393B	200mm Deep Black	1
CB3393C	200mm Deep Clear	1

Third Size 325 x 176mm

Code	Description	Pack
CB3400B	65mm Deep Black	1
CB3400C	65mm Deep Clear	1
CB3401B	100mm Deep Black	1
CB3401C	100mm Deep Clear	1
CB3402B	150mm Deep Black	1
CB3402C	150mm Deep Clear	1
CB3403B	200mm Deep Black	1
CB3403C	200mm Deep Clear	1

Gastronorm Accessories

Code	Description	Pack
CB3897	Polycarbonate Divider Bar 530mm	1
CB3898	Polycarbonate Divider Bar 325mm	1
GR3897	Stainless Steel Divider Bar 530mm	1
GR3898	Stainless Steel Divider Bar 325mm	1

Quarter Size 265 x 162mm

Code	Description	Pack
CB3410B	65mm Deep Black	1
CB3410C	65mm Deep Clear	1
CB3411B	100mm Deep Black	1
CB3411C	100mm Deep Clear	1
CB3412B	150mm Deep Black	1
CB3412C	150mm Deep Clear	1

Sixth Size 176 x 162 mm

Code	Description	Pack
CB3420B	65mm Deep Black	1
CB3420C	65mm Deep Clear	1
CB3421B	100mm Deep Black	1
CB3421C	100mm Deep Clear	1

Ninth Size 176 x 108mm

Code	Description	Pack
CB3430B	65mm Deep Black	1
CB3430C	65mm Deep Clear	1
CB3431B	100mm Deep Black	1
CB3431C	100mm Deep Clear	1

Polycarbonate Clear Lids

Code	Description	Pack
CB3450	Full Size	1
CB3451	Half Size	1
CB3452	Third Size	1
CB3453	Quarter Size	1
CB3454	Sixth Size	1
CB3455	Ninth Size	1



Identiclip Gastronorm Food Storage Containers



Code	Description	Pack
ST7021	2/3 Size (354 x 325mm) x 150mm	4
ST7012	1/2 Size (325 x 265mm) x 100mm	4
ST7020	1/2 Size (325 x 265mm) x 150mm	4
ST7014	1/3 Size (325 x 176mm) x 150mm	6

A range of gastronorm sized storage containers incorporating the identiclip system of colour coding clips for easy identification of food contents during storage. Freezer, dishwasher and microwave safe.

Polycarbonate Square Storage Containers

Store more in less space. Square containers store up to 25% more on a shelf than round containers in the same space. Break-resistant clear polycarbonate for visibility & long life. Reinforced stacking lugs on all corners help prevent jamming. Wide, easy grip handles with drain holes for quick drying. Textured exterior for better grip, smooth interior for easy cleaning. Dishwasher safe.

Code	Description	Pack
CB3550	1.9 Ltr 18.1cm x 18.1cm x 9.65cm	1
CB3551	3.8 Ltr 18.1cm x 18.1cm x 18.5cm	1
CB3552	5.7 Ltr 22.2cm x 22.2cm x 18.6cm	1
CB3553	7.6 Ltr 22.2cm x 22.2cm x 22.9cm	1
CB3554	11.4 Ltr 28.3cm x 28.3cm x 21cm	1
CB3555	17 Ltr 28.3cm x 28.3cm x 31.9cm	1
CB3570	Lid for 1.9 Ltr & 3.8 Ltr Containers Green	1
CB3572	Lid for 5.7 Ltr & 7.6 Ltr Containers Red	1
CB3574	Lid for 11.4 Ltr & 17 Ltr Containers Blue	1



Polycarbonate Food Boxes

Extend the freshness of your ingredients and eliminate points of cross contamination. Snap tight lids won't come off during transportation. Reinforced top and bottom corners on both box and lid, help prevent chipping and cracking. Capacity indicators for better portion control. Freezer and dishwasher safe.



Code	Description	Pack
CB3557	7.5 Ltr 46 x 30.5 x 9cm	1
CB3558	13.25 Ltr 46 x 30.5 x 15cm	1
CB3559	18.9 Ltr 46 x 30.5 x 23cm	1
CB3560	Lid - Fits 46 x 30.5cm Food Boxes	1
CB3561	18.9 Ltr 66 x 46 x 9cm	1
CB3562	32 Ltr 66 x 46 x 15cm	1
CB3563	47.3 Ltr 66 x 46 x 23cm	1
CB3564	81.4 Ltr 66 x 46 x 30cm	1
CB3565	Lid - Fits 66 x 46cm Food Boxes	1

Code	Description	Pack
CB3566	Colander - Fits 23cm & 38cm Deep Food Boxes	4

Drain vegetables or fruit, thaw frozen meat or poultry and reduce risk of cross contamination.



Dunnage Racks

Code	Description	Pack
CB3580	76 x 53.3 x 30cm Max Load 680 Kg	1
CB3581	91.5 x 53.3 x 30cm Max Load 680 Kg	1
CB3582	122 x 53.3 x 30cm Max Load 1360 Kg	1
CB3583	152.5 x 53.3 x 30cm Max Load 1360 Kg	1
CB3584	Camlink - Locks Dunnage Racks Together	6

Keep frozen, chilled or dry goods safely 30 cm off the floor. Made from heavy duty polypropylene they are easy to clean and won't rust or bend.

Slotted tops allow maximum air circulation around perishable goods.

Can be linked together for even greater stability.



Mobile Caterbins

Code	Description	Pack
BH1731	Caterbin 41 x 41 x 51cm	1
BH1730	Caterbin 41 x 41 x 76cm	1

Designed to fit under standard work tables, easy to move on 4 x 100mm nylon swivel castors. Bin moulded in one piece from foodsafe natural polythene.



Ingredient Bins

Code	Description	Pack
CB3588	81 Ltr 75 x 33 x 71cm	1
CB3589	102 Ltr 75 x 42 x 71cm	1
CB3590	140 Ltr 75 x 32 x 74 Ltr	1

Designed to fit under standard work tables. Store dry bulk ingredients such as flour and grain. Hygienic clear sliding lid reduces handling and allows for quick content identification.

3" (7.6 cm) casters feature excellent stability and weight bearing capability.

S-Hook included for hanging scoop conveniently in front. (Scoop not included).



Round Brute Containers

Code	Description	Pack
RU3810	40cm Dia x 43.5cm High 38 Ltr	1
RU3811	Lid For 38 Ltr Container	1
RU3812	50cm Dia x 58cm High 76 Ltr	1
RU3813	Lid For 76 Ltr Container	1
RU3814	56cm Dia x 69cm High 121 Ltr	1
RU3815	Lid For 121 Ltr Container	1
RU3817	Brute Container Trolley Fits 76 Ltr & 121 Ltr Containers Only	1

Double-ribbed base increases stability and dragging capacity. Reinforced rims add strength and durability. Strong, snap-on lids are available for secure, stable stacking. All plastic construction will not rust, chip or peel; resists dents. Built-in handles allow easy, non-slip lifting and anti-jam nesting. (Containers, Lids & Trolley are all sold separately).



Scoops

Easy-grip plastic handle doesn't transfer cold. Features a hole for hanging or tying to a container. Durable polycarbonate material for long-lasting use. Dishwasher safe.

Code	Description	Pack	Code	Description	Pack
CB7091	Clear Polycarbonate 950ml	1	CB7089	Clear Polycarbonate 180ml	1



Code	Description	Pack	Code	Description	Pack
NV3605	Poly 23cm 2.25 Ltr 80oz	1	NV3601	Stainless Steel 23cm 1.7 Ltr 60oz	1

Plastic construction prevents scratching on surfaces



Provides high resistance to staining and maintains an excellent finish.



Fridge/Freezer Storage Containers

An inexpensive range of polypropylene food storage boxes.

Code	Description	Pack	Code	Description	Pack
WF7021	19cm Dia x 11cm 2 Ltr	1	WF7023	21 x 15 x 8cm 1.5 Ltr	1
WF7022	27 x 20 x 11cm 4 Ltr	1	WF7025	30 x 30 x 18cm 10 Ltr	1



Store Fresh Containers

Air & liquid tight. Dishwasher, freezer & microwave safe.

Code	Description	Pack	Code	Description	Pack
ZD7031	25 x 18.5 x 8.5 cm 2.5 Ltr	1	ZD7033	25 x 18.5 x 15 cm 4 Ltr	1



Store Fresh Containers continued

Code	Description	Pack	Code	Description	Pack
ZD7035	30.5 x 23 x 12cm 5.3 Ltr	1	ZD7037	30.5 x 23 x 18.5cm 9 Ltr	1



Day Of The Week Labels

Food labelling is a must-have in the modern commercial kitchen. This inexpensive system will guarantee the most effective use of ingredients, ensuring that wastage is kept to a minimum. The set includes a clear plastic dispenser, 7 round 0.75" day rolls (Mon-Sun) rolls of 1000.

Code	Description	Pack
MT3819	Day Of The Week Label Set & Dispenser 1000 labels on each roll	1
MT3822	Round Day Label 19mm - Monday Roll of 1000	1
MT3823	Round Day Label 19mm - Tuesday Roll of 1000	1
MT3824	Round Day Label 19mm - Wednesday Roll of 1000	1
MT3825	Round Day Label 19mm - Thursday Roll of 1000	1
MT3826	Round Day Label 19mm - Friday Roll of 1000	1
MT3827	Round Day Label 19mm - Saturday Roll of 1000	1
MT3821	Round Day Label 19mm - Sunday Roll of 1000	1



Heavy Duty Brute Storage Boxes

The ultimate storage and transport container. Made of commercial grade material to withstand heavy-duty use. Features easy access handles for convenient mobility. Holes in handle allow water to drain, reducing risk of bacteria build up. Lid snaps tight, keeping contents secure. Reinforced ribbed bottom allows product to be dragged. Containers stack securely for efficient use of space.

Code	Description	Pack
RU3818	53 Ltr 71 x 42 x 27cm	6
RU3819	75.5 Ltr 71 x 44 x 38.5cm	6



Tote Box

Heavy duty polypropylene.

Code	Description	Pack
ST7036	Tote Box Grey 56 x 42 x 13cm	1



Cutting Edge Dispenser

For busy caterers who want to save time and money whilst maintaining a safe, clean working environment this dispenser is the ideal solution. Designed to cut cling film, foil or baking paper quickly and cleanly every time. Patented silicone jaw protects fingers from blade. Removable quick clean blade cartridge. Economically priced refills.

Code	Description	Pack
TX7531	Cutting Edge Dispenser	1
TX7532	Cling Film 45cm x 300 Mtr	1
TX7533	Aluminium Foil Refill 45cm x 90 Mtr	1
TX7534	Bakewell Refill 45cm x 50 Mtr	1



Cutlery Tray

Code	Description	Pack
ST7035	4 Section 53 x 32.5 x 10cm Grey	1

Heavy duty polypropylene.



Stainless Steel

Cutlery Holder

Code	Description	Pack
MT6071	6 Hole Including Cylinders	1
MT6072	Spare Stainless Steel Cutlery Cylinder	1
NV7077	Plastic Cutlery Cylinder	1



Rinsing Baskets

Code	Description	Pack
RB9956	7 Bowl Rack 380 x 280mm	1
RB9950	12 Plate Rack 445 x 280mm	1

Manufactured from heavy duty steel wire with a hard nylon coating.

Designed for use in high temperature wash sinks as used in schools, hospitals and other institutional kitchens.



Code	Description	Pack
RB9953	Beaker/Cutlery Small 356 x 254mm	1
RB9954	Beaker/Cutlery Large 458 x 368mm	1



Code	Description	Pack
RB9955	8 Meal Tray Rack 445 x 280mm	1

Thermometers

Code	Description	Pack
TN3584	Fridge/Freezer Thermometer	1

This easy to read fridge/freezer thermometer has a Ø52mm dial and indicates temperature over the range of -30°C to 30°C in 1°C divisions. It incorporates colour-coded zones for ease of reading. Provides an economical and simple way of monitoring fridge or freezer temperature. It is housed in a durable ABS case incorporating a plastic hook to hang from a shelf.



Code	Description	Pack
TN3590	Heavy Duty Fridge/Freezer Thermometer	1

This spirit-filled fridge freezer thermometer is both stylish and functional. It is encased in a transparent ABS housing that measures 10 x 32 x 124mm and has stainless steel trim. It indicates temperature over a range of -40°C to 20°C. The thermometer's colour-coded zones allow for clear and easy to read temperature display. Designed to be hung from a shelf or wall-mounted (brackets supplied).



Thermometers continued

Code	Description	Pack
TN3592	Digital Fridge Thermometer	1

This water resistant digital fridge thermometer incorporates a large and clear digital display that indicates temperature over the range of -9.9°C to 49.9°C with a 0.1°C resolution.

It features a unique food safety zone icon in the display that indicates when the thermometer is outside the range of 0 to 8°C. It's energy saving feature turns the unit off when it is deprived of light; maximising battery life.

The thermometer is powered by a single CR2032 battery with a life expectancy of 5 years. It is housed in a robust ABS case that measures 18 x 42 x 71mm and can be free-standing or hung from a shelf in the fridge.



Code	Description	Pack
ET8066	FoodSafe Fridge Thermometer	1

The easy to read FoodSafe Thermometer is ideal for domestic or commercial use, as it is reliable, robust and hygienic. It indicates temperature over the range of -25°C to 40°C with an accuracy of ±1°C over the range of -5°C to 20°C, 2°C thereafter.

The thermometer is housed in a clear plastic case with colour-coded zones that indicate when the temperature is too warm.

It measures Ø25 x 150mm high and is supplied with a metal hook for hanging in a fridge.



Code	Description	Pack
TN3588	Oven Thermometer	1

This stainless steel oven thermometer features a Ø50mm dial with colour-coded zones.

The green marker indicates the minimum temperature that commercial heated display units should be kept at. It indicates temperature over the range of 50°C to 300°C in 10°C divisions.

The case measures 50 x 60 x 70mm.

The thermometer can be free-standing or hung from a shelf and should be positioned in the middle of the oven for the most accurate temperature reading.



Code	Description	Pack
ET8113	Digital Fridge/Freezer Thermometer	1

Max/min digital fridge freezer alarm thermometer that indicates temperature over the range of -49.9°C to 69.9°C with a resolution of 0.1°C/°F and an accuracy of ±1°C.

This fridge thermometer features a large LCD display, a max/min memory function to record the highest and lowest temperatures and an audible alarm.

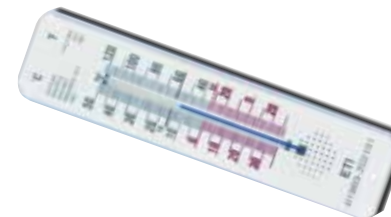
The thermometer incorporates two temperature sensors, a remote water resistant probe with a one metre PVC lead for the appliance temperature, and an internal sensor for the room temperature.

The remote probe can be mounted onto the fridge internal wall using the suction pad or mounting bracket supplied.

**Thermometers** continued

Code	Description	Pack
TN3585	Room/Wall Thermometer	1

This wall-mounted room thermometer is spirit filled and is ideal for the home, conservatory, office or factory. It displays temperature over the range of -30°C to 50°C with an accuracy of ±1°C.



Code	Description	Pack
TN3586	Sugar & Jam Thermometer	1

Traditional brass thermometer.

Clearly marked scale indicates caramel, jam, hard & soft ball.



Temp range +40°C to +200°C

Code	Description	Pack
MP3595	Electronic Pocket Thermometer	1

This compact pen-shaped thermometer measures temperature over the range of -49.9°C to 149.9°C. It features a Ø3.5 x 120mm pointed stainless probe. It incorporates a °C/°F switch and a display hold feature. Each unit is supplied with a probe cover that incorporates a pocket clip.



Code	Description	Pack
ET8064	Thermamite Thermometer & Probe	1

The Thermamite digital catering thermometer offers accuracy, flexibility and ease of use, coupled with the durability and reliability required by the food and catering industry in helping to meet today's food hygiene legislation.

It incorporates a clear, easy to read LCD display with a precise read-out of temperature over the range of -50°C to 300°C with a 1°C resolution.

Housed in an ergonomic, tough ABS case that includes 'Biomaster' additive that reduces bacterial growth.

Supplied with a permanently attached pointed, stainless steel food penetration probe (Ø3.3 x 100mm) and a 500mm PVC lead.

A traceable certificate of calibration is included.

Code	Description	Pack
ET8084	Multi-Function Thermometer	1

This thermometer incorporates a display hold facility and a max/min memory function together with an adjustable audible high/low temperature alarm.

The unit indicates temperature over the range of -49.9°C to 149.9°C with a 0.1°C resolution.

The rear of the case incorporates a useful foldaway worktop stand, a pocket clip and a probe storage clip.

Each unit is supplied with a pointed, stainless steel, penetration probe (Ø3.3 x 125mm) with a one metre PVC connecting lead and probe cover.



Thermometers continued

Code	Description	Pack
------	-------------	------

ET8067 SuperFast Thermapen Thermometer 1

Incorporates a large digital display with a precise read-out of temperature over the range of -49.9°C to 299.9°C with a 0.1°C resolution and an accuracy of $\pm 0.4^\circ\text{C}$.

The casing is washable and includes 'Biomaster' additive that reduces bacterial growth and the ergonomic rubber seal minimises the risk of the ingress of water, dust or food.

It incorporates a reduced tip, stainless steel, $\varnothing 3.3 \times 115\text{mm}$ food penetration probe that folds back through 180 degrees into the side of the instrument when not in use.

Powered by two lithium coin cell batteries with a minimum life expectancy of 1500 hours.

A traceable certificate of calibration is included.



Code	Description	Pack
------	-------------	------

ET8085 Food Check Thermometer 1

The Food Check thermometer is designed specifically for the food and catering professional who wishes to purchase an economically priced digital thermometer. It will measure temperature quickly and accurately when monitoring cooked and chilled foods as part of HACCP and health and safety procedures.

It measures temperature over the range of -49.9 to 299.9°C with a resolution of 0.1°C. Each Food Check thermometer is supplied with a permanently attached food penetration probe with 130mm pointed stainless steel stem and 500mm PVC connecting lead and is the ideal choice for routine food inspections.



Code	Description	Pack
------	-------------	------

ET8061 Therma 20 Hand Held Thermometer 1

The Therma 20 hand held thermistor thermometer has been specifically designed for use in the food processing and catering industries with HACCP, due diligence and health and safety procedures in mind.

The instrument displays temperature to 0.1°C over the range of -39.9 to 149.9°C with a high system accuracy of $\pm 0.4^\circ\text{C}$ (-10 to 70°C) which is guaranteed for life, due to the instruments advanced electronics. It features an easy to read, LCD display with low battery indication.

The thermometer can be used in low ambient working temperatures down to -20°C, which meets the requirements of the European Standard EN13485 for the temperature monitoring of quick frozen foods. Supplied with traceable certificate of calibration.



Probe supplied separately

Code	Description	Pack
------	-------------	------

ET8062 General Penetration Probe 130 x 0.3mm 1

This pointed, stainless steel, penetration probe is strong and versatile. Suitable for a variety of food applications including liquids and semi solids. A wide range of interchangeable probes are available, please contact us for details.

Code	Description	Pack
------	-------------	------

ET8071 Reference Thermometer 1

The Reference thermometer is an ideal instrument for comparison checking the calibration and accuracy of thermometers and probes. Supplied with a permanently attached high accuracy probe 130 x 3.3mm. Temperature range -199.9 to 199.9°C. Supplied with a 5 point UKAS Certificate of Calibration.

**Thermometers** continued

Code	Description	Pack
------	-------------	------

ET8090 Therma 20 Catering Kit 1

Professional catering thermometer kit supplied in a useful ABS carrying case. Supplied with traceable certificate of calibration.

Each Kit Contains

- 1 x Therma 20 Thermometer
- 1 x Penetration Probe
- 1 x Flexible Air Probe
- 1 x Temperature Log Book
- 1 x Tub of 40 Probe Wipes
- 1 x ABS Carry Case



Code	Description	Pack
------	-------------	------

ET8072 Thermistor Test Cap -18°C. 1

ET8073 Thermistor Test Cap 0°C. 1

ET8074 Thermistor Test Cap +3°C. 1

ET8075 Thermistor Test Cap +70°C. 1

ET8076 Thermistor Test Cap +100°C. 1

Calibration test caps are suitable for checking the accuracy of the Therma 20 or any equivalent thermistor thermometer. Simply plug in the desired test cap and the display on the thermometer should show the same temperature as the certified value, therefore you can be assured that your instrument is calibrated and reading correctly.

Each test cap is supplied complete with a UKAS Certificate of Calibration with a guaranteed uncertainty of $\pm 0.1^\circ\text{C}$.

**Infrared Thermometers**

The advantage of an infrared thermometer against a conventional probe thermometer is speed and the fact that it is non-contact. But please bear in mind that they only measure the surface temperature. They are easy to use simply point the instrument at the object you wish to measure and read the temperature on the LCD.

Code	Description	Pack
------	-------------	------

ET8081 Ray Temp 3 Infrared Thermometer 1

The RayTemp 3 measures temperature over the range of -60 to 500°C with an assured accuracy of $\pm 1^\circ\text{C}$ over the range of 0 to 65°C, outside of this range $\pm 2^\circ\text{C}$ of reading in an ambient temperature of between 15°C and 25°C, with a repeatability of $\pm 1^\circ\text{C}$ of reading. Lightweight and easy to use. Ideal for frozen food.



Code	Description	Pack
------	-------------	------

ET8087 Infrared IR-Pocket Thermometer 1

Simply aim at the target and press the measure button to display the surface temperature instantly. Indicates temperature over the range of -49.9 to 349.9°C with a resolution of 0.1°C. It incorporates maximum and minimum temperature functions together with an autpower off facility that automatically turns the instrument off after fifteen seconds. The distance to target ratio is 1:1 and therefore the thermometer should be positioned as close to the target as possible.



Thermometer Accessories

Code	Description	Pack
ET8083	Temperature Log Book A5	1

In commercial kitchens each fridge freezer or cold cabinet should have its own temperature log/record book or folder. Our log books contain six months' supply of easy to use record sheets with a wipe clean cover. Each log book allows the user to enter three readings per day consisting of the temperature, the time and the initials of the person responsible for recording the data.



Code	Description	Pack
ET8077A	Probe Wipes - Case of 200	1
ET8077	Probe Wipes - Case of 200 (Ctn of 6 Cases)	1

Each tub contains 200 blue anti-bacterial probe-wipes measuring 130 x 130mm.
Tubs are supplied individually or in cartons of six.



Fatigue Relief Mat

Code	Description	Pack
MT7652	91 x 122cm	1



Rubber Entrance Mat

Code	Description	Pack
MT7640	91 x 152cm	1



Retractable Barrier

Code	Description	Pack
PQ3550	188cm High 35cm Dia. 1.5 Mtr Barrier	1



First Aid

Sterile Blue Detectable Plasters. Electromagnetically and visibly detectable.

Code	Description	Pack
FS1769	Catering First Aid Kit 10 Person Complete	1
FS1756	Small First Aid Box - Empty	1
FS1750	Assorted Plasters	10
FS1751	Plasters Small	10
FS1752	Plasters Medium	10
FS1753	Plasters Large	10
FS1767	Fingertip Plaster	10
FS1755	Waterproof Finger Stall Blue	1
FS1759	Sterile Lint Extra Large	1
FS1760	Sterile Lint Medium	1
FS1761	Sterile Lint Large	1
FS1763	Sterile Eye Pad With Bandage	1
FS1764	Triangular Bandage 127 x 90 cm	1
FS1768	Sterile Gauze Swabs	5
FS1757	Safety Pins	6
FS1758	First Aid Scissors	1
FS1766	Stainless Steel Tweezers 13 cm	1
FS1754	First Aid Sticker - Green Cross	1
FS1765	First Aid Guidance Leaflet	1



Fire Blanket

Code	Description	Pack
BH1751	1.8 x 1.2 Mtr	1

Signs

Starter Packs

Code	Description	Pack
MT7605	Food Hygiene Starter Pack	17

Contains 17 self-adhesive notices, covering food storage and general kitchen safety:

including:
Food safety act, Chopping board notice, Cook chill guidelines,
Now wash your hands, Sink for food wash, Sink for utensils wash,
Sink for hands wash, Raw meat only, Cooked meat only,
Defrosted food must not be refrozen, All foods must be covered,
Waste in bins provided, Fish only, Leave basin clean,
No smoking symbol,
Dangerous machine warning,
First aid symbol.



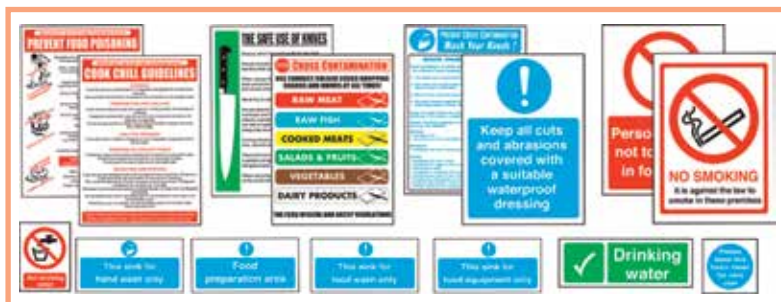
Signs continued

Starter Packs continued

Code	Description	Pack
MT7601	Food Preparation Starter Pack	15

Contains 14 Self Adhesive Food Preparation Notices:

including:
Safe use of knives, Staff smoking offence,
Prevent cross contamination, Drinking water,
Personal items, Food preparation area, Wash hands,
Keep cuts covered, Cook chill guidelines,
Prevent food poisoning, Leave basin clean,
Not suitable for drinking, Food equipment only,
Food wash only.



Guidance Posters

Code	Description	Pack
MT7613	Kitchen Hygiene For Caterers Poster 840 x 590mm	1

Easy to follow plastic coated sign.



Code	Description	Pack
MT7617	Food Preparation And Storage Poster 840 x 590mm.	1

Easy to follow plastic coated sign.



Code	Description	Pack
MT7609	Health and Safety Law Poster 1mm rigid pvc	1



Self Adhesive Food Preparation Notices

Code	Description	Pack
MT7621	Hand Wash Only Sign	1
MT7622	Food Wash Only Sign	1
MT7623	This Sink For Pot Wash Only Sign	1
MT7624	Utensil Wash Only Sign	1
MT7625	Raw Food Only Sign	1
MT7627	Veg And Salad Only Sign	1
MT7629	Food Preparation Area Sign	1



230 x 90mm

Catering Equipment Furniture

Bistro Tables & Chairs

Code	Description	Pack
BZ0281	Bistro Round Table 720mm(Dia) x 600mm(H)	1



Code	Description	Pack
BZ0285	Bar Round Table 600mm(Dia) x 1050mm(H)	1



Code	Description	Pack
BZ0283	Bistro Square Table 600 x 600mm x 720mm	1



Bistro Tables & Chairs *continued*

Specially designed for indoor and outdoor use.
Strong, weather-resistant, rust-proof and virtually maintenance free.

Code	Description	Pack	Code	Description	Pack
BZ0261	Stacking Chair with Arched Arms	4	BZ0264	Stacking Bistro Chair	4



Code	Description	Pack	Code	Description	Pack
BZ0267	Folding Bistro Chair	4	BZ0271	Bar Stool	4



Butterfly Chairs

Ergonomically designed minimalist seating to suit a wide range of decor.
Great for cafés, restaurants and bistros. Indoor use only.
Supplied fully assembled. Chrome plated steel legs.
460mm seat height.

Code	Description	Pack
BZ0313	Butterfly Chair Dark Wood	4



Code	Description	Pack
BZ0310	Butterfly Chair Natural	4

Table Tops

These are high quality table tops resistant to the effects of mechanical, thermal and chemical stresses.
They are suitable for indoor and outdoor use and their smooth sealed surface makes them easy to clean and fulfils the hygiene requirements of the professional catering industry. 720mm high table when assembled with base.
Ideal for indoor or outdoor use. Combine with your choice of table bases.

Code	Description	Pack
BZ0340	Dark Wood 600mm Dia.	1
BZ0343	Dark Wood 800mm Dia.	1



Table Tops continued

Code	Description	Pack
BZ0346	Light Beech 600mm Dia.	1
BZ0349	Light Beech 800mm Dia.	1



Code	Description	Pack
BZ0352	Italian Walnut 600 x 600mm	1



Code	Description	Pack
BZ0355	Light Beech 600 x 600mm	1



Mix & Match Contemporary Table Bases

A selection of table bases all of which are compatible with our table top range. When combined with a table top all are 720mm high.

Contemporary base with stylish aluminium finish. Compatible with our extensive Table Top range. Manufactured for indoor/outdoor use. Flat pack for easy self assembly. Pole tube size: 58mm diameter x 1.2mm thick. Suitable for tops up to 800mm round. Dimensions 680(h) x 650(w)mm.

Code	Description	Pack
BZ0328	Aluminium Four Leg	1



Suitable for use on table tops up to 800 mm round. Easy self assembly. Manufactured for indoor/outdoor use. Dimensions 720(h) x 480(w)mm. Image shows Light Beech Table Top - available separately.

Code	Description	Pack
BZ0334	Cast Iron Leg	1



Compatible with our extensive Table Top range. Manufactured for indoor/outdoor use. Flat pack for easy self assembly. Dimensions Bottom base width: 430mm diameter. Image shows Light Beech Table Top - available separately.

Code	Description	Pack
BZ0331	Stainless Steel Round	1



Contemporary, durable design suitable for use in cafés, bars, pubs and restaurants. Indoor use only. Dimensions 720(h) x 550(dia)mm.

Code	Description	Pack
BZ0337	Cast Iron Round	1



Disposables

Paperware

Code	Description	Pack
TX7503	D'oylies Oval 23 x 16cm	250
TX7507	D'oylies Round 12cm	250
TX7510	D'oylies Round 21.5cm	250
TX7513	Plates 19cm	100
TX7514	Plates 23cm	100
TX7518	Tray Mats 41 x 30cm	250
TX7502	Cake Cases	1000
SP7506	Greaseproof Paper Ream 70 x 45cm	1



Plasticware

Code	Description	Pack
TX7530	Cling Film 300mm x 300mtr	1
TX7515	White Plastic Cups 20cl	100



Terinex "Edge" Dispensing System

Designed to cut foil, cling film and baking paper quickly, cleanly and safely.

Code	Description	Pack
TX7531	Cutting Edge Dispenser	1
TX7532	Cling Film Refill 45cm x 300m	1
TX7533	Aluminium Foil Refill 45cm x 90m	1
TX7534	Bakewell Refill 45cm x 50cm	1



Foilware and Parchment

Code	Description	Pack
TX7536	Foil Catering 300mm x 75mtr	1
TX7537	Foil Catering 300mm x 90mtr	1
TX7539	Foil Catering 450mm x 75mtr	1
TX7540	Foil Catering 500mm x 90mtr	1
TX7542	Baking Parchment 45cm x 75cm Non-Stick	1



Foil Containers

Large Rectangular Foil Containers

Code	Description	Pack
RR1301	Large Rectangular Foil Containers (6A)	500
RR1301L	Large Lid for Foil Containers (6A)	500



Medium Rectangular Foil Containers

Code	Description	Pack
RR1303	Medium Rectangular Foil Containers (2A)	1000
RR1303L	Medium Lid for Foil Containers (2A)	1000



Small Rectangular Foil Containers

Code	Description	Pack
RR1305	Small Rectangular Foil Containers (1A)	1000
RR1305L	Small Lid for Foil Containers (1A)	1000



Compartment Containers

Code	Description	Pack
RR1311	2 Compartment Container 176 x 162 x 30 mm	300
RR1311L	Lid to Fit RR1311	300



Code	Description	Pack
RR1313	3 Compartment Foil Container 227 x 177 x 39 mm	300
RR1313L	Lid to Fit RR1313	300



Code	Description	Pack
RR1321	Foil Pie Container 110 x 33 mm	1000
RR1323	Foil Pudding Basin 156 x 71 mm	300
RR1325	Foil Pudding Basin 79 x 47 mm	920



Catering Clothing



Basic Stud Jacket

Simple, durable and comfortable Unisex style. Double breasted with hemmed cuffs. Polycotton with press stud fastening.

Code	Description	Pack	Code	Description	Pack
ZE2227	Jacket Full Sleeve Black	1	ZE2225	Jacket Full Sleeve White	1



Code	Description	Pack	Code	Description	Pack
ZE2228	Jacket Half Sleeve Black	1	ZE2226	Jacket Half Sleeve White	1



Superior Jacket

Unisex traditional style designed for comfort and practicality. Double breasted with inset front pocket. Thermometer pocket on sleeve. Polycotton with 12 removable black stud buttons.

Code	Description	Pack	Code	Description	Pack
ZE2230	Jacket Full Sleeve White	1	ZE2231	Jacket Half Sleeve White	1



Chef's Trousers

Unisex design baggy fit. Elasticated drawstring waistband. Two side pockets & one back pocket. Long leg (33") which can be rolled up as required.

Code	Description	Pack
ZE2233	Black	1



Code	Description	Pack
ZE2239	Black/White Large Check	1



Code	Description	Pack
ZE2235	Blue/White Small Check	1



Bib Aprons

Reinforced corner piece where tape meets apron for longevity.

Code	Description	Pack
ZE2287	White - Polycotton 70 x 100cm	1



Code	Description	Pack
ZE2291	Black - Polycotton 70 x 90cm	1



Code	Description	Pack
ZE2298	Large Blue/White Stripe - Waterproof PVC	1



Tabards

Concealed popper fastening.
Made from 65% Polyester & 35% cotton.
Available in Small & Large

Code	Description	Pack
ZE2279	Tabard Red	1
ZE2282	Tabard Blue	1
ZE2284	Tabard Black	1

**SIZE CHART
CHEST**

XS	32-34"
S	36-38"
M	40-42"
L	44-46"
XL	48-50"
XXL	52-54"

**SIZE CHART
WAIST**

XS	26-28"
S	30-32"
M	34-36"
L	38-40"
XL	42-44"
XXL	46-48"

Polycotton Neckerchiefs

Suitable for commercial laundering.

Code	Description	Pack
ZE2340	Black	1
ZE2344	White	1

**Polycotton Beanies**

All one size.

Code	Description	Pack
ZE2349	White	1
ZE2352	Large Black & White Check	1
ZE2353	Black	1

**Hats**

All one size.

Code	Description	Pack	Code	Description	Pack
ZE2359	White Net Peaked Cap	1	ZE2361	White Peaked Cap	1

**Safety Shoes**

A lightweight occupational trainer offering SRC slip resistance and certified to EN ISO 20347:2012. The breathable upper is a mix of leather and durable mesh, which will keep feet cool all day long and the enCounter heel support system adds support and comfort. The Utah are perfect for all day wear in a busy job. Premium Leather & Mesh Upper. enCounter Heel Support. Heel Energy Absorption. Antistatic. Oil Resistant Rubber Outsole. UK Sizes 3 to 13

Code	Description	Pack
AT2121	Utah Trainers	Pair



A high performance slip resistant safety shoe aimed principally at the food industry and medical sectors to provide excellent toe protection and increased wearer comfort. Performance technology resists water and the Diamond Line anti-microbial mesh lining prevents odours. The Ontario also offers excellent comfort for all day wear. The Traction Cellular Footbed offers cushioning and improved fit whilst aiding with pressure displacement and weight distribution and the enCounter heel support holds your foot in place and supports your feet for vastly improved comfort. Designed to meet the enduring appeal of the slip-on shoe, these are a great all round product. Steel Toecap. Heel Energy Absorption. Antistatic. Water Resistant Upper. Oil Resistant PU Outsole. Anti-Microbial Lining. UK Sizes 3 to 13

Code	Description	Pack
AT2123	Ontario Safety Shoes	Pair



The original high performance executive shoe with excellent SRC slip resistance, utilising the Clipper outsole and certified to EN ISO 20345:2011. The Tulsa boasts a range of features such as lightweight composite toe protection and enCounter heel support that holds your foot in place and supports your feet for vastly improved comfort. It is also built with Anvil Tech Performance Technology, providing excellent water resistance combined with highly breathable upper materials. Composite Toe. Traction Cellular Footbed. Heel Energy Absorption. Antistatic. Water Resistant Upper. Oil Resistant PU Outsole. UK Sizes 3 to 13

Code	Description	Pack
AT2125	Tulsa Safety Shoes	Pair



These high performance, mid-cut, SRC rated slip resistant safety boots bring together excellent toe and midsole protection without compromising on weight due to the inclusion of composites. Certified to EN ISO 20345:2011, they benefit from a breathable full-leather upper and a Traction Cellular Footbed that offers cushioning and improved fit whilst aiding with pressure displacement and weight distribution for additional comfort over long wear periods. Composite Toe & Midsole. enCounter Heel Support. Heel Energy Absorption. Antistatic. Oil Resistant PU Outsole. UK Sizes 3 to 13

Code	Description	Pack
AT2127	Hartford Safety Boots	Pair



Disposables

Blue Disposable Apron

Offering light protection against spillage. Polyethene One Size.

Code	Description	Pack
ZE2300	Blue Apron 107 x 68cm	100



Paper Forage Hat

One size fits all.

Code	Description	Pack
ZE2302	Forage Hat White	100



Blue Disposable Gloves

Lightly powdered vinyl. CE approved and latex free.

Code	Description	Pack
ZE2504	Medium	100
ZE2505	Large	100



Safety and Cleaning



Bins

Ready assembled from high quality heavy duty materials. Available in 5 wood grain effects; Oak, Beech, Walnut, Ash and Maple. Dimensions (l x w x h); 600 x 400 x 1000mm

Code	Description	Pack
PR7050	Tray Stand with Bin	1



Code	Description	Pack
WF7068B	Swing Top Bin 10Ltr	1
WF7067B	Swing Top Bin 50Ltr	1



Free-standing Pedal Operated to Leave Hands Free. Suitable for Plastic and Paper Sacks. Powder Coated in White.

Code	Description	Pack
BH1732	Refuse Sack Holder	1



Hinged lid for ease of emptying. Ergonomic handles Mobile - for easy transportation. Recessed castors to save space when not used. Design may vary.

Code	Description	Pack
CA7079	Mobile Refuse Bin 80 Ltr - Green	1



Similar to BH1732 but fitted with two wheels and a handle. Dimensions (l x w x h); 430 x 308 x 890mm

Code	Description	Pack
BH1732A	Mobile Refusac Holder	1

Bins continued

Promote recycling and improve productivity. The industry standard in space-saving waste management. Efficient size and shape fits tight spaces. Durable, all-plastic construction is easy to clean and provides long life. Most specified containers behind bars and desk side. Container dimensions: (l x w x h); 589 x 279 x 632mm. Containers & Lids supplied separately.

Code	Description	Pack
RU3851	Slim Jim Container Grey 60 Ltrs	1
RU3855	Slim Jim Lid With Handle Grey	1
RU3857	Slim Jim Bottle Lid Green	1
RU3859	Slim Jim Paper Lid Blue	1



Linking trolley effectively moves multiple units in one trip or can be used individually as a dolly. Image shows Slim Jim Containers with Bottle & Paper Lids - not included.

Code	Description	Pack
RU3861	Slim Jim Dolly	1

Standard lid colour; Beige. Also available in Red, White, Green and Blue. Tight-fitting, overlapping lid to help contain odours. Quiet, heavy-duty pedal for hands-free sanitary use. Tough, puncture-resistant, all-plastic construction. Supplied flat packed for easy assembly.

Code	Description	Pack
GC7051	Black Dustbin 80 Ltr	1



Code	Description	Pack
CS3713	Step-on Bin Beige 45.4 Ltr	1
CS3715	Step-on Bin Beige 68 Ltr	1
CS3717	Step-on Bin Beige 87 Ltr	1



Cleaning Aids

Two-sided, 62cm high. Folds flat for convenient storage. Lightweight and versatile; makes a heavy statement about safety.

Code	Description	Pack
RU3701	Wet Floor Sign	1



Code	Description	Pack
BC8030	Dishcloth 45 x 30cm Soft and Hardwearing	1



Code	Description	Pack
BC8033	Floor Cloth 48 x 50cm	1



Heavy duty. Machine washable.

Code	Description	Pack
MP3590	Cut Resistant Glove Individual	1



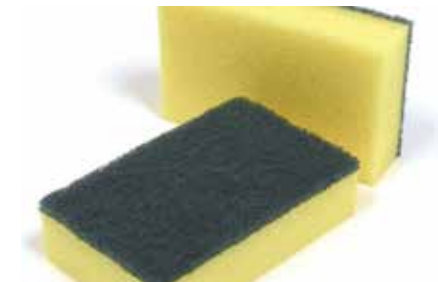
Code	Description	Pack
VL8041B	Rubber Gloves Size 8 Medium	1
VL8041C	Rubber Gloves Size 9 Large	1



Code	Description	Pack
BC8044	Tea Towel Checked Cotton	1
BC8045	Tea Towel Cotton/Linen	1



Code	Description	Pack
VL8040	Pan Cleaner Sponge with Green Back	2



Cleaning Aids continued

Code	Description	Pack
VL8042	Green Scourer	1



High capacity liquid soap system with a choice of re-fills; Bacterial - for food preparation areas
Lotion - lightly perfumed for wash rooms.

Code	Description	Pack
MT7555	Spray Soap Dispenser	1
MT7557	Spray Soap Lotion	1
MT7559	Bacterial Spray Soap Lotion	1



Code	Description	Pack
CA7093W	Toilet Brush and Holder White	1



Each sheet is folded into the preceeding sheet for individual sheet by sheet dispensing
Attractive and economical plastic dispenser

Code	Description	Pack
MT7551	Hand Towel Dispenser	1
MT7553	250 Z Fold Paper Towel Refills	12



Code	Description	Pack
CA8026	V Sweeper c/w Dust Pads 100cm wide	1
CA8028	Replacement Pads Only	1



Brushware

Recommended Colour Codes

Red - Sanitary appliances & washroom floors.

Green - General food & bar use.

Blue - General lower risk areas (excluding food areas).

Yellow - Washbasins & other washroom surfaces.

Code	Description	Pack
BC8041B	Broom Hygiene Blue Soft 30cm	1
BC8041G	Broom Hygiene Green Soft 30cm	1
BC8041R	Broom Hygiene Red Soft 30cm	1
BC8041Y	Broom Hygiene Yellow Soft 30cm	1
BC8042B	Broom Hygiene Blue Stiff 30cm	1
BC8042G	Broom Hygiene Green Stiff 30cm	1
BC8042R	Broom Hygiene Red Stiff 30cm	1
BC8042Y	Broom Hygiene Yellow Stiff 30cm	1



Code	Description	Pack
BC8044B	Broom Handle Blue 125cm	1
BC8044G	Broom Handle Green 125cm	1
BC8044R	Broom Handle Red 125cm	1
BC8044Y	Broom Handle Yellow 125cm	1

Code	Description	Pack
CA8008HB	Handbrush Soft with Dustpan Blue	1
CA8008HG	Handbrush Soft with Dustpan Green	1
CA8008HR	Handbrush Soft with Dustpan Red	1
CA8008HY	Handbrush Soft with Dustpan Yellow	1
CA8009HB	Handbrush Stiff with Dustpan Blue	1
CA8009HG	Handbrush Stiff with Dustpan Green	1
CA8009HR	Handbrush Stiff with Dustpan Red	1
CA85009HR	Handbrush Stiff with Dustpan Yellow	1



Mops and Buckets

Code	Description	Pack	Code	Description	Pack
GG8041B	Cotton Mop Blue 200grm	1	BC8044B	Mop Handle Blue 137cm	1
GG8041G	Cotton Mop Green 200grm	1	BC8044G	Mop Handle Green 137cm	1
GG8041R	Cotton Mop Red 200grm	1	BC8044R	Mop Handle Red 137cm	1
GG8041Y	Cotton Mop Yellow 200grm	1	BC8044Y	Mop Handle Yellow 137cm	1



Code	Description	Pack
BC3687B	Mop Bucket With Wringer Blue	1
BC3687G	Mop Bucket With Wringer Green	1
BC3687R	Mop Bucket With Wringer Red	1
BC3687Y	Mop Bucket With Wringer Yellow	1

24 Ltrs with high efficiency side press wringer. Accommodates up to 560gm mops. Wet floor warning sign on side.



Code	Description	Pack
WF7069B	Bucket 9 Ltr	1



Code	Description	Pack
WF7053	Mop Bucket With Strainer 14 Ltr	1



Aa		Chopping Board Rack	72	Fryers - Electric	16
Airpot - Electric	18	Chopping Boards	72	Frypans - Induction Non Stick	81
Apple Corer - Soft Grip	55	Clingfilm & Dispenser/Cutter	90, 104	Frypans - Non Stick	81 - 82
Aprons	107	Clock	59	Frypans - Stainless Steel	82
Aprons - Disposable	110	Coffee Grinders	21	Funnels - Plastic	59
Bb		Coffee Machines	18 - 21	Gg	
Bag Sealers	28	Colanders - Aluminium	55	Garlic Press - Aluminium	61
Bains Marie	17	Colander - Plastic	59	Garlic Press - Soft Grip	55
Bakewell Pans - Aluminium	75	Colanders - Stainless Steel	55	Gas Lighter	62
Baking & Steaming (Grundy) Tins	76	Contact Grills	11-13	Gastronorms - Polycarbonate	85
Baking Dishes - Aluminium	76	Combination Ovens	6-7	Gastronorms - Stainless Steel	83 - 84
Baking Parchment	104	Cooks Fork	71	Gloves - Cut Resistant	113
Baking Sheets - Aluminium	75	Corkscrew/Waiters Friend	62	Gloves - Disposable	110
Baking Sheets - Non Stick	77	Cups - Disposable	104	Gloves - Rubber	113
Barbecues	14	Cutlery Holder - Stainless Steel	90	Grater - Mouli	62
Barriers - Retractable	96	Cutlery Trays	90	Grater - Stainless Steel	56
Beanies	108	Dd		Greaseproof Paper	104
Bins - Kitchen	111 - 112	Dish Caddy	47	Griddle - Electric	17
Bins - Recycling	112	Dishcloths	113	Griddle Scraper	60
Blenders - Bar/Kitchen	23, 29	Dishwashers	36	Hh	
Blenders - Stick	22, 29	Dishwasher Racks	37 - 38	Hand Towels & Dispenser	114
Blow Torch/Butane	68	Double Boilers - Aluminium	80 - 81	Hotcupboards	31
Boiling Pots - Aluminium	80	Double Boilers - Stainless Steel	82	Ii	
Boiling Pots - Stainless Steel	82	Dough Scraper	60	Ice Cream Scoop	53
Boiling Tops	16-17	D'oylies - Paper	104	Ice Cream/Potato Portioners	53
Bowl Scraper	60	Dredgers - Polycarbonate	60	Induction Hobs	13
Bread Tins - Non Stick	78	Dredgers - Stainless Steel	57	Ingredient Bins	87
Brooms & Brushes	115	Dunnage Racks	87	Insulated Transport Bag	39
Brush - Toilet	114	Ee		Insulated Transport Boxes	39-41
Bucket - Plastic	115	Egg Poacher	81	Insulated Transport Carts	41 - 42
Bun Tins - Non Stick	77	Egg Slicer - Heavy Duty	62	Insulated Transport Carts - Heated	42 - 43
Cc		Egg Slicer - Plastic	61	Jj	
Cake Cases - Paper	104	Egg Wedger	61	Jackets - Chefs	106
Cake Cooling Racks	57, 78	Ff		Juice Extractor - Plastic	62
Cake Tins - Non Stick	78 - 79	Fire Blanket	97	Kk	
Canelle Cutter	61	First Aid	97	Kettles - Aluminium	81
Casseroles - Glass	59	Fish/Egg Slice - Black Handle	54	Kettles - Electric	29
Chairs	100 - 101	Fish/Egg Slice - Soft Grip	55	Kitchen Knife Sets	70
Cheese Board	72	Fish/Egg Slice - Stainless Steel	51	Kitchen Knives	68 - 71
Cheese Wires	72	Fish/Egg Slice Nylon	55	Kitchen Timer	68
Chef's Hats	108	Flan Server - Stainless Steel	51	Knife - Electric	29
Chef's Hats - Disposable	110	Flan Tins - Non Stick	79	Knife Racks - Magnetic	71
Chiller Plate	43	Floor Cloths	113	Knife Sharpeners	71
Chinois	56	Foil Food Containers & Lids	105	Knife Wallet	71
Chip Scoop - Black Handle	54	Foil - Aluminium	104	Ll	
Chip Scoop - Stainless Steel	53	Food Merchandisers	30 - 31	Label Dispenser	89
Chip Scuttle	16	Food Processors	25	Labels	89
Chip Shovel - Wire Mesh	58	Food Storage Bins - Mobile	87	Ladle - Nylon	55
Chopping Board Colour Chart	725	Food Storage Containers	86 - 89	Ladle - Pea	51

Ladles - Black Handle	54	Potato Masher - Wire	57	Stockpots - Stainless Steel	82
Ladles - Stainless Steel	51	Potato Ovens	9-10	Strainers Conical	56
Lattice Cutter	66	Potato Peeler - Electric	28	Strainers/Sieves - Plastic	59
Lockers	44	Pudding Basins - Plastic	68	Strainers/Sieves - Stainless Steel	57
Mm		Rr		Tt	
Matting	96	Refrigeration	32 - 35	Tabards	108
Measuring Jugs - Glass	59	Rinsing Baskets		Tables	99 - 103
Measuring Jugs - Plastic	58	Roasting Dishes - Aluminium	76	Tart Tins - Non Stick	79
Measuring Jugs - Stainless Steel	56	Roasting Dishes - Stainless Steel	77	Tea Towels	113
Measuring Spoons	68	Rolling Pin - Wooden	60	Thermo Barriers	43
Meat Slicers	27	Rolling Pins - Plastic	65	Thermometer Log Books	96
Melon Baller	61	Ss		Thermometer Probe Wipes	96
Microwave Ovens	15	Salad Fork - Black Handle	54	Thermometer Test Caps	95
Mixers - Electric	26-28	Salad Spoon - Black Handle	54	Thermometers	91 - 95
Mixing Bowls - Glass	59	Salamander Grill - Electric	17	Tin Opener - Butterfly	65
Mixing Bowls - Plastic	58	Sandwich Tins - Non Stick	78	Tin Opener - Magican	65
Mixing Bowls - Stainless Steel	56	Saucepans - Aluminium	80 - 81	Tin Opener - Soft Grip	55
Mixing Spoons - Melamine	59	Saucepans - Non Stick	81	Tin Openers - Bonzer	64
Mixing Spoons - Wooden	60	Saucepans - Stainless Steel	82	Toaster - Sandwich	11
Mops & Buckets	114, 116	Scale Weight Sets	75	Toasters - Conveyor	11
Muffin Tins - Non Stick	78	Scales - Balance	75	Toasters - Slotted	10
Nn		Scales - Electronic	73 - 75	Tongs - Black Handle	54
Neckerchiefs	108	Scales - Mechanical	73 - 74	Tongs - Stainless Steel	52 - 53
Oo		Scissors	71	Tote Box	89
Omelette Pans - Non Stick	82	Scoop - Paris	61	Tray Mats - Paper	104
Oven Cloths	63	Scoop - Stainless Steel	88	Trolley - Plate Carrier	47
Oven Gloves	63	Scoops - Polycarbonate	88	Trolleys - Cutlery	47
Oven Range	8	Scourers	114	Trolleys - Gastronorm	48
Ovens - Convection	8	Scrapers - Hi-Heat	60	Trolleys - General Purpose	45
Pp		Scrapers - Plastic	60	Trolleys - Material Handling	49
Pan Cleaners	113	Serving Spoons - Black Handle	54	Trolleys - Storage	48
Pasta Maker	62	Serving Spoons - Nylon	55	Trolleys - Tray & Cutlery	47
Pastry Brushes	65	Serving Spoons - Soft Grip	55	Trolleys - Tray Clearing	47
Pastry Cutters	66 - 67	Serving Spoons - Stainless Steel	51	Trolleys - Tray Stacking	46
Pastry Server - Black Handle	54	Shelving	49 - 50	Trolleys - Utility Carts	45 - 46
Peeler - Lancashire	61	Shoes - Safety	109	Trousers - Chefs	107
Peeler - Stainless Steel	61	Signs	97 - 98	Turner - Stainless Steel	51 - 52
Peelers - Soft Grip	55	Skewers	62	Vv	
Pie Server - Stainless Steel	51	Skimmer - Nylon	55	Veg Prep Machines	24
Piping Bags	65	Skimmers - Wire Mesh	57 - 58	Ww	
Piping Tubes	65	Slotted Slice - Black Handle	54	Wet Floor Sign	113
Pizza Cutter - Soft Grip	55	Soup Kettle	10	Whisk - Nylon	55
Pizza Cutter - Stainless Steel	57	Sous Vide	12	Whisk - Soft Grip	55
Pizza Pan - Non Stick	78	Spaghetti Spoon - Nylon	55	Whisks - Nylon Handle	53
Plate Scraper	60	Spatulas - Plastic	60	Whisks - Stainless Steel	53
Plate Warmers	29	Spoonulas - Hi Heat	60	Whisks - Wire Heavy Duty	58
Plates - Paper	104	Spray Soap & Dispenser	114	Wok - Non Stick	82
Portioners	53	Step Ladders	63	Zz	
Potato Masher - Nylon	55	Step Stools	63	Zester	61

1. DEFINITIONS

In these conditions of sale:

1.1 "The Company" means W V Howe Ltd.

1.2 "The Customer" means any person, persons, or company who places an order, or buys any goods from the Company and includes the servants, agents or sub-contractors of any such person or Company.

1.3 "Equipment" means any machine or equipment supplied by the Company.

1.4 "Contract" means a contract between the Company and the Customer for the supply of Products.

1.5 "Statutory Interest" means statutory interest as defined in the Late Payment of Commercial Debts (Interest) Act 1998

2. DESCRIPTIONS

The Company reserves the right to vary or modify the specification of the Products without notice unless a written undertaking has been given to the contrary.

3. PRICES AND VARIATION OF QUOTATION

3.1 Unless otherwise agreed in writing the Company reserves the right to make such amendments or cancel the quotation or order should any information or data supplied by the Customer to the Company prove to be incomplete or inaccurate in any respect.

4. TITLE

4.1 Title in the Products shall not pass to the Customer until all sums due from the Customer to the Company howsoever they shall have arisen have been received in full.

4.2 Until title passes to the Customer, the Customer shall store the Products in such a way that they are clearly identifiable as the property of the Company.

5. RISK

The risk of loss or damage to the Products delivered under this Contract shall pass to the Customer upon delivery to the Customer's premises. Delivery under this condition shall be deemed to have been effected upon the delivery vehicle reaching the delivery site. The unloading of the delivered Products from the vehicle and the movement and storage of the said products shall be the responsibility and at the risk of the Customer.

6. SETTLEMENT TERMS

6.1 Unless otherwise specified in a written agreement all sums payable in respect of Equipment supplies under the Contract must be paid without deductions within 28 days from the end of the calendar month in which the invoice was raised.

6.2 Failure to pay by the due date shall entitle the Company to suspend delivery of all unexecuted orders. The time of payment of the price of Products shall be of the essence in the Contract.

6.3 If payment is not made in accordance with this clause, the Company reserves the right to charge Statutory Interest on the overdue balances for the period from the date on which payment shall have become due until the date on which payment shall be made including any period after the date if any judgement or Decree against the Customer.

7. DELIVERY AND DELAY

7.1 Deliveries of Products to the Customer shall be in accordance with the Company's delivery schedule. The Company shall be liable for any loss or damage howsoever arising as a result of failure to deliver Products by a particular date or arising as a result of any cause beyond the Company's control. Time for delivery shall not be of the essence unless otherwise agreed by the Company in writing.

7.2 If the customer fails to take the delivery or fails to give the Company adequate delivery instructions at the time

stated for the delivery then without prejudice to any other right of remedy available to the Company, the Company may:-

7.2.1 Charge the Customer the cost of carriage of the refused delivery both to and from the premises of the Customer in addition to the Company's administration charges involved.

8. DAMAGED/LOSS AND RETURN PROCEDURES

No claim for incorrectly ordered goods will be accepted by the Company. Rejection of any goods delivered by the Company must be as follows:-

8.1 We should be notified in writing or by facsimile within 7 days of missing or damaged goods.

9. CANCELLATION OF ORDER

Any order accepted by the Company cannot be cancelled by the Customer without written consent of the Company. The Company reserve the right upon consent being given to levy a cancellation charge of not less than 20% to indemnify the Company for any loss whatsoever (including loss of profit) arising from the cancellation. Non-stock Products ordered on behalf of the Customer cannot be returned, unless the manufacturer agrees to accept them.

10. CROCKERY - CUSTOM MADE PATTERNS

Manufacturers of Equipment have minimal initial quantities and minimal repeat order quantities and these vary by manufacturers. Quantities of Equipment cannot be guaranteed and are subject to a 10% tolerance factor, which must be accepted by the Customer.

11. ADDITIONAL TERMS

11.1 No forbearance or indulgence on the part of the Company in enforcing these Conditions shall in any way restrict, waive or prejudice any rights the Company may have under the Conditions or howsoever against the Customer.

11.2 These Conditions represent the entire contract between the parties hereto and supersede all prior agreements or communications (oral or written) between the parties.

11.3 The Company, but not the Customer, may assign the benefit of any Contract of sale under the Conditions.

11.4 The Company shall incur no liability whatsoever for any breach of contract of sale occasioned by reason of circumstance beyond its control or by reason of force majeure and in particular but without prejudice to the generality of the foregoing by reason of any delay or failure on the part of the manufacturer of any of the Company's products to supply such products of the Company.

11.5 Any written communications given pursuant to these Conditions shall be deemed to have been received by the addressee three days after its dispatch in the ordinary course of post.

11.6 All disputes between the Company and the Customer arising out of or in relation to this Contract shall be referred to the determination of an arbitrator to be appointed by agreement of the parties or (in default of agreement within 21 days of the service upon one party of a written request to concur in such appointment) by the President for the time being of the Chartered Institute of Arbitrators.

11.7 This Contract shall be governed by the laws of England and the Customer agrees to submit to the non-exclusive jurisdiction of the English courts.

11.8 If the Customer is a partnership the liability of the individual partners to the Company shall be joint and several.

11.9 The signature on behalf of a Customer who is a limited company by any person purporting to sign with the Customer's authority shall bind the Customer and the Customer shall be liable to comply with these terms.



Creative Catering

EQUIPMENT & UTENSILS 2017 ~ 2018



W.V. Howe Ltd

65 Melchett Road
Kings Norton Business Centre
Kings Norton
Birmingham
B30 3HP

Tel: 0121 433 3651

Fax: 0121 459 3121

orders@wvhowe.co.uk

www.wvhowe.co.uk